

Original Research

Diagnostic value of MRI-DWI signal intensity value combined with serum PGI, PGII and CA199 in early gastric cancer

Minhong Li¹, GuangHui Zheng², Lin Yu¹, Li-lian Tan¹, Xi Li¹, Min-Jian Li¹, Chaowei Li¹, Shuxin Li¹, Jiefeng Liang¹, Zhongqi Zhong¹, Zhi Ming Li^{1*}

¹The Second Affiliated Hospital of Guangzhou Medical University, Department of Radiology, Guangzhou, China

²Department of Emergency, Sun Yat-sen Memorial Hospital, Sun Yat-sen University, Guangzhou, China

*Correspondence to: limingzhi0804@163.com

Received July 14, 2021; Accepted August 11, 2021; Published August 31, 2021

Doi: <http://dx.doi.org/10.14715/cmb/2021.67.2.14>

Copyright: © 2021 by the C.M.B. Association. All rights reserved.

Abstract: To explore the diagnostic value of MRI-DWI signal intensity value combined with serum PGI, PGII and CA199 in early gastric cancer. Sixty cases of gastric cancer patients admitted to our hospital from December 2019 to December 2020 were selected as the gastric cancer group and 80 cases of healthy volunteers who underwent physical examination in our hospital during the same period were selected as the healthy group. All the 60 patients underwent MRI-DWI examination, and the pathological diagnosis results were regarded as the gold standard. MRI-DWI images, MRI-DWI signal intensity values of patients with different degrees of gastric cancer differentiation. Serum PGI, PGII and CA199 levels of subjects in the two groups were compared. AUC was used to evaluate the diagnostic value of MRI-DWI signal intensity value combined with serum PGI, PG II and CA199 for early gastric cancer. In the healthy group, T1WI showed relatively uniform low signal intensity. While T2WI showed no significant increase in signal intensity. In the gastric cancer group. There was diffuse gastric wall thickening, local thickening or mass formation; T1WI and WATS showed slightly lower signal intensity in the lesion area. T2WI, FLAIR and B-TFE showed slightly uneven or moderately increased signal intensity. DWI showed limited diffusion, and the signal intensity increased uniformly or more uniformly, and the range of increase was clear. The signal intensity of MRI-DWI was 89.12 ± 8.14 in patients with low differentiation, 82.17 ± 6.35 in patients with moderate differentiation, and 74.52 ± 4.53 in patients with high differentiation. There were significant differences in the signal intensity of MRI-DWI among the three groups, and the difference was statistically significant ($F=12.214$, $P<0.05$). Serum PGI levels of subjects in the gastric cancer group were significantly lower than those in the healthy group, and the levels of PGII and CA199 were significantly higher than that in the healthy group, with statistical significance ($P<0.05$). The AUC, sensitivity and specificity of MRI-DWI signal intensity value and serum PGI, PGII and CA199 combined indexes in the diagnosis of gastric cancer were significantly higher than those of the independent indexes, with statistical significance ($P<0.05$). Conclusion: MRI-DWI signal strength value, serum PGI, PGII and CA199 levels are closely related to the occurrence and development of early gastric cancer. The combined detection and diagnosis efficiency is higher, which is helpful to improve the detection rate of early gastric cancer and is worthy of extensive clinical application.

Key words: Magnetic resonance imaging diffusion-weighted imaging; Pepsinogen I; Pepsinogen II; Carbohydrate antigen 199; Early gastric cancer.

Introduction

Gastric cancer (gastric carcinoma) is a malignant tumor originating from the epithelium of the gastric mucosa (1) which occurs in any part of the stomach. Most of them are in the gastric sinuses, and large stomach bends, small stomach bends, and front and rear walls can be affected (2). The vast majority of gastric cancer is adenocarcinoma. Early gastric cancer patients usually have no special clinical symptoms, may appear abdominal discomfort, belching and other nonspecific symptoms, often similar to stomach ulcers. Gastritis and other stomach chronic disease symptoms are easily ignored which leads to the low diagnosis rate of early gastric cancer. Most patients diagnosed progress to middle and late, and are prone to metastasis, increasing the risk of mortality (3-4). At present, CT, gastroscopy is often used to diagnose gastric cancer, including CT examination (5) Gastroscope, as a gold standard, is widely used in the diagnosis of gastric mucosal lesions which is invasive and the patient acceptance is poor (6). Both

people have limitations. Magnetic resonance dispersion-weighted imaging (magnetic resonance imaging diffusion-weighted imaging, MRI-DWI) is an imaging technique based on flow effects, one of the elements of MRI imaging (7). MRI observed macroscopic blood flow phenomena, and DWI observed microscopic water molecular flow diffusion phenomena, and this technique presents structural changes within the tissue (8). With the further study of the clinical diagnosis of gastric cancer, the expression of tumor markers and pepsinogen (pepsinogen, PG) is significantly associated with the occurrence and development of gastric cancer (9). However, most of the research on gastric cancer is treatment, single diagnosis and postoperative nursing (10-12). The diagnostic effect of MRI-DWI combined with tumor markers and pepsinogen PG was less reported. Therefore, this study studied 60 patients with gastric cancer admitted to our hospital from December 2019 to December 2020, and aims to explore the diagnostic value of MRI-DWI signal strength combined with serum PGI, PGII, sugar antigen 199 (carbohydrate antigen 199,

CA199) for early gastric cancer, so as to improve the clinical detection effect of early gastric cancer, timely intervention and provide data support and theoretical reference. It is now reported below.

Materials and Methods

General information

We selected 60 patients with gastric cancer admitted to our hospital from December 2019 to December 2020, 37 men, 23 women in age; 42~70, average age 57.64 ± 6.92 ; 10 lesions: gastric, 42 gastric sinuses, 8 cardia; differentiation: 14 low differentiation, 19 and 27 with high differentiation. Sixty patients with gastric cancer were treated as the gastric cancer group, and another 80 volunteers who had the health examination in the hospital at the same time were selected as the health group. All 60 patients underwent MRI-DWI and underwent pathological diagnosis. All patients and their families were fully aware of the study and signed informed consent. This study was approved by the ethics committee of the court.

Include the standards and exclusion criteria

Inclusion criteria: 1. All patients were diagnosed with gastric cancer through gastroscopy and pathology; 2. no history of radiotherapy, chemotherapy and immunotherapy for gastric cancer before entering the study; 3. the clinical data were complete; 4. good compliance and no mental illness or consciousness disorders; and 5. no other malignant tumors. Exclusion criteria: 1. serious lesions or dysfunction with heart, liver, and kidney organs; 2. blood, immune and neurological diseases; 3. infectious or infectious diseases; 4. aneurysms; and 5. pregnant and lactating women.

MRI-DWI check method

All patients examined fasting and breathing training before 7 hours, checked muscular injection of alkali (Jiangsu Huayang Pharmaceutical Co., Ltd., Chinese medicine H32020834) 10 minutes ago, and told the patient to drink 1 L of warm water for 5 minutes to keep the stomach full. The patient took the flat position, performed an MRI-DWI scan with Siemens superconducting 1.5T MRI scanner and 8 through the abdominal coil. General MRI scan includes [1] T1W1: TR=213ms, TE=4.6ms, FOV=375, The thickness is 8.0/0.8mm, Matrix is 256×512 ; [2] Air shear T2W1: TR=2500ms, TE=100ms, FOV=375, The thickness is 8.0/0.8mm, Matrix is 400×512 ; [3] Air screen cross shear pressure grease SPAIR: TR=416ms, TE=80ms, FOV=375. The thickness is 8.0/0.8mm, The Matrix is 256×512 , TSE factor =59; [4] Air screen cross shear T1W1-Wats: TR=148ms, TE=5.7ms, FOV=375, The thickness is 8.0/0.8mm, Matrix is 304×512 ; [5] B-TFE crown position: TR=3.6ms, TE=1.8ms, FOV=375, The thickness is 8.0/0.2mm, The Matrix is 256×256 , TFE Factor =171.

The DWI scan adopts the plane echo imaging (echo planer imaging, EPI) sequence with the following parameters: the dispersion weighted coefficient b value is $0,600s/mm^2$, TR=2280ms, TE=58ms, FOV=375, RFOV=70%, with a matrix of 128×256 , a total of 2 excitations, and a scan time of the 20s.

Save and upload the collected images to the Siemens

Syngo workstation for processing. See the film by three experienced imaging physicians, observed the gastric wall thickness, signal strength value, and measured DWI performance diffusion coefficient (apparent diffusion coefficient, ADC) value, and mass location. A circular maximum area of interest with a diameter greater than 10mm, but not beyond the normal gastric wall or lesion range is selected, and the phantom and necrotic areas are avoided.

Serum PGI, PGII, CA199 level detection method

Serum PGI, PGII, CA199 levels were tested for all 140 subjects. All patients fasted for 12 hours before collecting blood samples. The gastric cancer group collected 3ml, on the morning of the hospital collected 5ml, on the morning of the physical examination, rotating at 2500 r/min, the upper serum after 10 minutes, and placed in the $-70^\circ C$ refrigerator for the test. Serum PGI, PGII levels were measured by enzyme-linked immunoadsorption and CA199 levels by a fully automated biochemical analyzer (Hitachi, 7600 model). Medical Reference Range: PGI:50.0-130.0g/L; PGII: 0-1.0g/L; CA199: <37. 0 U/L.

Observation indicators

Observation indicators included 1. Comparison of the MRI-DWI image features between the two groups of research subjects. 2. Comparison of MRI-DWI signal strength values of different degrees of differentiation of gastric cancer. 3. Serum PGI, PGII, CA199 level comparison between the two groups. 4. MRI-DWI signal strength value combined with serum PGI, PGII, CA199 level in the diagnosis of early gastric cancer.

Statistical processing

The data was analyzed using SPSS 22.0 statistical software. Among them, the measurement data meeting normal distribution is represented by mean \pm standard difference ($\pm s$), the t-test was used between-group comparison and variance analysis is used; count data cases (n) or percentage (%), and the data comparison adopts χ^2 test. α The diagnostic value was evaluated using the area (Area under curve, AUC) under the subject working feature (Receiver Operating Characteristics, ROC) curve. The difference is statistically significant when $P < 0.05$.

Results

General information

The general data such as gender, age, and body mass index (Body Mass Index, BMI) were not statistically significant ($P > 0.05$). See Table 1.

Comparison of the MRI-DWI image features between the two groups of study subjects

Health group: T1WI showed uniform moderate low signal intensity and T2WI signal intensity is not significant.

Gastric cancer group: diffuse thickening, local thickening or mass formation, T1WI, Wats showed the lesion area and the intensity of T2WI, FLAIR and B-TFE. DWI display all show that the diffusion is limited, the signal intensity is uniform, more uniform increase,

Table 1. Comparison of the general data of the two groups of research subjects

		Gastric cancer group (n = 60)	Health group (n = 80)	Statistical values	The P value
Gender	Male	37	49	1.568	0.154
	Female	23	31		
Average age (year of age)		57.65±6.91	57.64±6.93	1.252	0.272
BMI (kg/m. ²)		22.84±2.36	22.78±2.41	0.874	0.312
Focus site	Gastric body	10	-	-	-
	Gastric sinus	42	-		
	Ben diac	8	-		
Degree of differentiation	Low differentiation	14	-	-	-
	Medium differentiation	19	-		
	High differentiation	27	-		

Table 2. Comparison of serum PGI, PGII, CA199 levels between the two groups.

	Gastric cancer group (n = 60)	Health Group (n = 30)	The t value	The P value
PGI (g / L)	39.61±8.32	121.59±20.33	16.142	0.000
PGII (g / L)	14.52±6.26	9.54±5.25	8.252	0.002
CA199 (U / mL)	131.41±40.11	18.42±5.12	15.024	0.000

Table 3. Comparison of MRI-DWI signal strength values combined with serum PGI, PGII, CA199 for diagnosis of early gastric cancer and pathological results.

Diagnosis mode	Pathology		Total
	Positive	Negative	
The MRI-DWI signal strength values were combined with the serum PGI, PGII, CA199	Positive	55	55
	Negative	5	5
Total	60	60	60

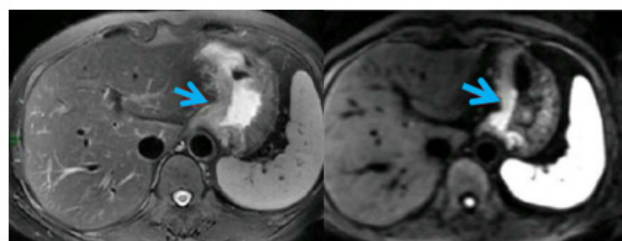


Figure 1. Patients with gastric cancer thickened and DWI showed dispersion restriction. Comparison of MRI-DWI signal strength values for different degrees of differentiation in gastric cancer.

and the increased range is clear (Figure 1).

Of the 60 patients with gastric cancer, low differentiated patients (n=14) MRI-DWI was 89.12 ± 8.196, 14,82.17 ± 6.35, 74.52 ± 4.53, and significant differences between MRI-DWI signal strength values in three groups (F=12.214, P <0.05), indicating increased MRI-DWI signal strength values with the occurrence and progression of gastric cancer.

Serum PGI, PGII, CA199 levels were compared between the two groups

Serum PGI levels were significantly lower than in the healthy group and significantly higher than in the health group, and the differences were statistically significant (P <0.05). See Table 2.

With the pathological diagnosis results as the gold standard, 55 gastric cancers were detected combined with serum PGI, PGII, CA199, with 5 missed cases, and the diagnostic sensitivity was 91.67% (55 / 60), as shown

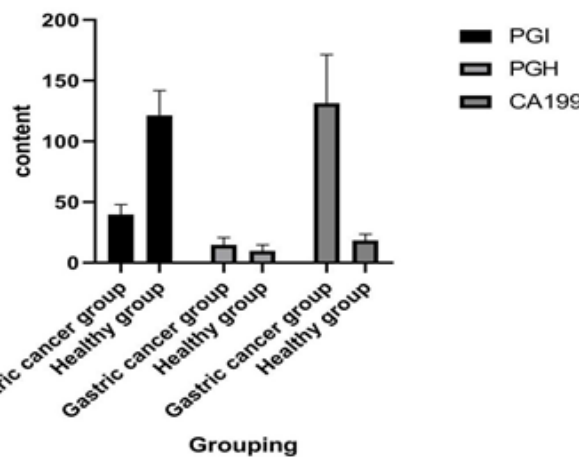


Figure 2. Comparison of serum PGI, PGII and CA 199 levels between the two groups. Value of MRI-DWI signal strength and serum PGI, PGII, CA199 level in the diagnosis of early gastric cancer.

in Table 3. The AUC, sensitivity and specificity of the MRI-DWI signal strength values of the MRI-DWI and serum PGI, PGII, CA199 were significantly higher than the independent indicators, and the differences were statistically significant (P <0.05). See Table 4.

Discussion

Gastric cancer is a common malignant tumor in the digestive system, with a high incidence of morbidity and mortality (13). Early gastric cancer cells are mainly infiltrated in the mucosa and submucosa, clinical symp-

Table 4. Comparison of MRI-DWI signal strength value and serum PGI, PGII, CA199 level for the diagnosis of early gastric cancer.

Diagnosis mode	AUC (95%CI)	truncation value	Sensitivity	Special homogeneity
MRI-DWI.	0.875 (0.742-0.932)	0.812	87.63%	70.91%
PGI.	0.741 (0.635-0.858)	70.786	71.62%	83.74%
PGII.	0.742 (0.625-0.843)	0.754	72.54%	81.14%
CA199.	0.763 (0.658-0.876)	37.12	74.25%	84.76%
Union	0.937 (0.894-0.973)	0.852	91.67%	95.17%

Note: Combination refers to the MRI-DWI signal strength value and serum PGI, PGII, CA199 combination index.

toms are atypical, so it is difficult to attract the attention of patients, leading to some patients have entered the middle and advanced stage, resulting in poor clinical efficacy and prognosis (14). Therefore, an early clear diagnosis is important to delay the progress of gastric cancer and improve patient prognosis. Gastroscopy is the main way of clinical diagnosis of gastric cancer, but it is an invasive operation, and the patient needs preoperative intestinal preparation, which limits the universality of its clinical application. MRI-DWI is an imaging technique that detects the diffusion function of water molecules in living tissues and reflects the micro-movement state of water molecules. Which can significantly compare tumor lesions and surrounding normal tissues, and is widely used in the clinical screening and diagnosis of malignant tumors such as liver cancer and breast cancer (15). In recent years, clinical oncology research has found that serum markers are fast and non-invasive (16). However, one or more serum markers have been found for specific diagnoses of gastric cancer. Therefore, joint diagnosis may help to further improve the diagnosis effect of early gastric cancer. Based on this study, by exploring the strength of MRI-DWI signal and serum PGI, PGII, CA199 combined diagnosis of early gastric cancer, this study provides a theoretical basis for improving the clinical detection effect and timely intervention.

MRI-DWI is more sensitive than conventional MRI scanning for tissue structure detection, whose principle mainly is that the tissue structure and cell density are judged by observing the tumor lesion signal intensity and combined with the water molecular dispersion state which can reflect the early normal tissue composition and pathological state. Tang, et al (17) was found that DW-MRI observed four signal characteristics of gastric cancer: uniform high signal, internal high signal, external low signal (two-layer type), high-low-high signal (three-layer sandwich type), and mixed type. Zhang et al, (18) have shown that all gastric cancer exhibits high signaling on DWI compared to adjacent normal gastric walls. On DWI, 69.6% of cancers exhibit three-layer sandwich signatures, high inner and outer signals, and low in the middle layer. In comparison with the pathology, the low signal strength represents the intrinsic muscle layer, and it is speculated that the scattering distribution of the cancer cells has less damage and less restriction. The results of this study show that The normal group showed a relatively uniform moderate and low signal strength, DWI in the gastric cancer group, The signal strength is uniform and more even higher, And the signal intensity value increases with the decrease of lesion differentiation, It indicates that the MRI-DWI

signal strength values are significantly different in normal gastric wall tissue and diseased tissue, The main manifestations of gastric cancer is increased signal intensity, And is negatively associated with the degree of differentiation, The analysis is that the low differentiated lesion tissue characteristics showed increased tumor plate thickness, cell density and cytometry, The proportion of the nucleus and the cytoplasm increases, These changes cause a reduced intracellular gap, Water molecular dispersion restriction in the tissue, Make the tissue T2 relaxation time extended, Increase the MRI-DWI signal strength value. Similar to the Tang L, Xiao P research findings.

PG is an inactive precursor of pepsin, which can be divided into PGI, PGII subgroups according to their biochemical properties. PGI, PGII is mainly released by gastric bottom line mucus neck cells and main cells, which are very stable in the blood. Therefore, serum level can reflect the functional status of the gastric mucosa and is gradually used in the clinical diagnosis of early gastric cancer (19). The study shows that the occurrence and development mechanism of cancer is complex and biological characteristics, including tumor markers reflecting the presence of the tumor can indicate the nature of the tumor (20). CA199 is a class of glycoproteins with significantly elevated levels in malignant tumors like the gastrointestinal, hepatobiliary, and pancreas (21). However, it lacks organ specificity, so it is mostly used as an auxiliary indicator of a gastric cancer diagnosis. Shen et al, (22) show that serological testing is an effective method of screening gastric cancer. Serum test results show that in <health group in PGI, G-17 group,> health group in PGII gastric cancer group, and the combination of different markers can improve diagnostic efficiency. Yin et al, (23) showed that serum CEA, CA199 expression was significantly higher than in healthy controls. The results showed that both serum PGI levels were significantly lower than healthy groups and significantly higher than healthy groups, suggesting a significant reduction in serum PGI level and elevated PGII, CA199 levels could assist in the diagnosis of gastric cancer. ROC results show that independent index diagnosis of early gastric cancer sensitivity and specificity is low, and three and MRI-DWI signal strength joint detection, sensitivity, specificity and AUC, significantly improve a single detection means and detection of single marker diagnosis early gastric cancer effect is not ideal, misdiagnosis and missed diagnosis risk is the higher joint diagnosis, MRI-DWI signal strength value and serum index combined diagnosis can effectively improve the diagnosis efficiency of early gastric cancer, higher accuracy. In addition, this study found that MRI-

DWI signal strength value combined with serum PGI, PGII, CA199 diagnosis of early gastric cancer 5 cases, the analysis reason is that MRI-DWI scanning contrast, MRI signal and patients' abdominal breathing artifacts will affect the imaging results and signal intensity value, and serum index also has certain uncontrollable factors, resulting in false-negative results. There have been many studies on gastric cancer, especially the genetic studies of gastric cancer (24-29). But like other abnormalities and diseases, a comprehensive genetic study (30) is needed.

Gastric carcinoma is a malignant tumor inventing from the epithelium of the gastric mucosa. It has a high mortality rate in many countries in East Asia. *Helicobacter pylori* is an infectable pathogen and is involved in its etiology (31-33). The expression of tumor markers and pepsinogen (PG) is significantly related to the occurrence and development of gastric cancer (34-35). The diagnostic value of CA199 has already been studied in Esohoseal cancer (36).

To sum up, MRI-DWI signal intensity value and serum PGI, PGII, CA199 levels are closely related to the occurrence and progress of early gastric cancer. Higher MRI-DWI signal intensity value, decreased serum PGI expression and increased PGII, CA199 expression all contribute to the diagnosis of early gastric cancer, with higher joint detection and diagnosis efficiency, which is of guiding significance for the diagnosis of early gastric cancer, and is worthy of extensive clinical application. However, there are fewer samples, and we need to expand the sample content and multicenter test data.

References

1. Yusuke H, Satoshi I, Noriko Y, et al. Feasibility of further expansion of the indications for endoscopic submucosal dissection in undifferentiated-type early gastric cancer. *Gastric Cancer* 2020;23(2):1025-1033.
2. Mikihiro K, Jun H, Mayumi K, et al. Gastrectomy for invasive micropapillary carcinoma is associated with poorer disease-free and disease-specific survival. *Int J Clin Oncol* 2019; 24(12):2011-2020.
3. Koseki Y, Hikage M, Fujiya K, et al. Utility of a modified age-adjusted Charlson Comorbidity Index in predicting cause-specific survival among patients with gastric cancer. *J Surg Oncol* 2021;47(8):1123-1127.
4. Lisa MH, Avani AP, James R, et al. Ultrasound-guided non-targeted liver core biopsy: comparison of the efficacy of two different core needle biopsy systems using an ex-vivo animal model and retrospective review of clinical experience. *Clin Imag* 2020;61(11):3020-3029.
5. Lee KG, Shin CI, Kim SG, et al. Can endoscopic ultrasonography (EUS) improve the accuracy of clinical T staging by computed tomography (CT) for gastric cancer?. *J Surg ONCOL* 2021;47(8):214-219.
6. Ding S, Hu SK, Pan JX, et al. A homogeneous ensemble method for predicting gastric cancer based on gastroscopy reports. *Expert Syst* 2020;37(3):368-371.
7. Tanaka O, Omatsu T, Kariya S, et al. Usefulness of diffusion-weighted magnetic resonance imaging for evaluating the effect of hemostatic radiotherapy for unresectable gastric cancer. *J Clin Gastroenterol.* 2019;12(3):1245-1248.
8. Harun A, Mehmet FO, Iskan C, et al. Contribution of diffusion weighted MRI to diagnosis and staging in gastric tumors and comparison with multi-detector computed tomography. *Radiol Oncol* 2017;51(1):1045-1049.
9. Sembiring J, Sarumpaet K, Ganie RA. Diagnostic test pepsinogen I and combination with tumor marker CEA in gastric cancer. *IOP Conf Ser: Earth Environ Sci* 2018;125(1): 2136-2140.
10. He QF, Chen JH, Zhou K, et al. Effect of Additional Trastuzumab in Neoadjuvant and Adjuvant Treatment for Patients with Resectable HER2-Positive Gastric Cancer. *Ann Surg Oncol* 2021;28(8):852-856.
11. Xu Q, Sun ZY, Li XL, et al. Advanced gastric cancer: CT radiomics prediction and early detection of downstaging with neoadjuvant chemotherapy. *Eur Radiol* 2021;27(14): 695-699.
12. Wang YY, Zhou Q. The effect of accelerated rehabilitation nursing on postoperative recovery, nutritional status, and psychological status in patients with gastric cancer. *Am J Transl Res* 2021;13(4):874-877.
13. Kurumi H, Nonaka K, Ikebuchi Y, et al. Fundamentals, Diagnostic Capabilities and Perspective of Narrow Band Imaging for Early Gastric Cancer. *J Clin Med* 2021;10(13): 901-905.
14. Isao F, Tatsuya T, Takafumi M, et al. Small early gastric cancer with synchronous bone metastasis: A case report. *Clin Oncol* 2020;12(3):654-658.
15. Sara L, Steven P, Stefanie JH, et al. Volumetric quantitative histogram analysis using diffusion-weighted magnetic resonance imaging to & nbsp; differentiate HCC from other primary liver cancers. *Springer Plus* 2019;44(3):1439-1443.
16. Liu ZN, Wang YK, Shan F, et al. Combination of tumor markers predicts progression and pathological response in patients with locally advanced gastric cancer after neo adjuvant chemotherapy treatment. *Bmc Gastroenterol* 2021;21(1):1723-1727.
17. Tang L, Sun YS, Li ZY, et al. Diffusion-weighted magnetic resonance imaging in the depiction of gastric cancer: initial experience. *Abdom Radiol* 2016;41(1):1134-1138.
18. Zhang XP, Tang L, Sun YS, et al. Sandwich sign of Borrmann type 4 gastric cancer on diffusion-weighted magnetic resonance imaging. *Eur J Radiol*, 2018;81(10):903-907.
19. Yuan L, Zhao JB, Zhou YL, et al. Type I and type II *Helicobacter pylori* infection status and their impact on gastrin and pepsinogen level in a gastric cancer prevalent area. *World J Gastroenterol* 2020; 26(25):856-860.
20. Xia YY, Hu XH, Di KL, et al. Combined Detection of Exosome Concentration and Tumor Markers in Gastric Cancer. *J Biomed Nanotechnol* 2020;16(2):1452-1457.
21. Luigina G, Elisabetta M, Annibale D. Prognostic Value of CEA and Ca 19.9/Tumor Markers in Gastric Cancer to Identify Patients with Poor Prognosis after Radical Surgery. *J Cancer* 2018;10(5):2178-2182.
22. Shen HZ, Xiong KW, Wu XY, et al. The Diagnostic Value of Serum Gastrin-17 and Pepsinogen for Gastric Cancer Screening in Eastern China. *Gastroent Res Pract* 2021;20(36):3621-3626.
23. Yin LK, Xu GX, Zhu YT, et al. Expression of miR-23a and miR-135 and tumor markers in gastric cancer patients and the significance in diagnosis. *Oncol Lett* 2019;18(6):746-750.
24. Kazemi E, Kahrizi D. The repeatability of PCR-RFLP method for study of association between gastric cancer and manganese superoxide dismutase mutant (Val-9Ala). *Biharean Biologist* 2017; 11(2): 112-114.
25. Kazemi E, Kahrizi D. Lack of association between gastric cancer and hopq alleles in *Helicobacter pylori*. *Genetika* 2016; 48(3): 893-902. <https://doi.org/10.2298/gensr1603893k>.
26. Kazemi E, Kahrizi D, Moradi MT, Sohrabi M, Yari K. Gastric Cancer and *Helicobacter pylori*: Impact of hopQII Gene. *Cell Mol Biol* 2016; 62(2): 107-110. <https://doi.10.14715/cmb/2016.62.2.18>.
27. Kazemi E, Kahrizi D, Moradi MT, Sohrabi M, Amini A, Mousavi SAR, Yari K. Association between *Helicobacter pylori* hopQI

- genotyping and human gastric cancer. *Cell Mol Biol* 2016; 62(1): 6-9. <https://doi.10.14715/cmb/2016.62.2.18>.
28. Kazemi E, Kahrizi D, Moradi MT, Sohrabi M, Amini A, Mousavi SAR, Yari K. Association between Manganese Superoxide Dismutase (MnSOD Val-9Ala) genotypes with the risk of generalized aggressive periodontitis disease. *Cell Mol Biol* 2016; 61 (8): 49-52.
29. Ismaili A, Yari K, Moradi MT, Sohrabi M, Kahrizi D, Kazemi, E, Souri Z. IL-1B (C+3954T) Gene Polymorphism and Susceptibility to Gastric Cancer in the Iranian Population. *Asian Pac J Cancer Prev* 2015; 16 (2): 841-844.
30. Kazemi E, Zargooshi J, Kaboudi M, Heidari P, Kahrizi D, Mahaki B, Mohammadian Y, Khazaei H, Ahmed K. (2020). A genome-wide association study to identify candidate genes for erectile dysfunction. *Briefings in Bioinformatics*. 2021.
31. Pittayanon R, Uedo N, Praipisut T, Tounai Y, Rerknimitr R, Kulavanijaya P. Factors Associated with High Mortality of Gastric Adenocarcinoma in Thailand Versus Japan. *APJCC Asian Pac J Cancer Care* 2018;3(2):29. <https://doi.org/10.31557/apjcc.2018.3.2.29>.
32. Goto Y, Syam AF, Darnindro N, Puspita Hapsari FC. Risk factors for and prevalence of *Helicobacter Pylori* infection among healthy inhabitants in Northern Jakarta, Indonesia. *Asian Pac J Cancer Care* 2016 Sep 1;17(9):4469-75.
33. Khazaei Z, Moradi Y, Adineh HA, Rezaei F, Sohrabivafa M, Darvishi I, Dehghani SL. Cancers attributable to infectious agents: An ecological study in Asia. *APJEC Asian Pac J Environ Cancer* 2018;1(1):35-40.
34. Mansour-Ghanaei F, Joukar F, Rajpout Y, Hasandokht T. Screening of precancerous gastric lesions by serum pepsinogen, gastrin-17, anti-*helicobacter pylori* and anti-CagA antibodies in dyspeptic patients over 50 years old in Guilan Province, north of Iran. *Asian Pac J Cancer Prev* 2014;15(18):7635-7638.
35. Shafaghi A, Mansour-Ghanaei F, Joukar F, Sharafkhan M, Mesbah A, Askari K, Geranmayeh S, Mehrvarz A, Souti F, Sokhanvar H, Fakhrieh S. Serum gastrin and the pepsinogen I/II ratio as markers for diagnosis of premalignant gastric lesions. *Asian Pac J Cancer Prev* 2013;14(6):3931-6.
36. Das S, mudra Kakoti L, Ahmed S, Sarma A. Study of Serum CEA and Ca 19.9 in Esophageal Squamous Carcinoma and ROC Curve Analysis. *Asian Pac J Cancer Biol* 2020 Dec 7;5(4):141-5.