

## Multi-omics in Spinal Cord Injury: Diagnosis, Prognosis, and Treatment

Hanxun Xu<sup>1</sup>, Wenhai Zhao<sup>2</sup>, Yimin Zhou<sup>1</sup>, Li Zhang<sup>3\*</sup><sup>1</sup> College of Traditional Chinese Medicine, Changchun University of Chinese Medicine, Changchun 130021, China<sup>2</sup> Orthopedic Center, Affiliated Hospital of Changchun University of Chinese Medicine, Changchun 130021, China<sup>3</sup> Principal's Office, Fujian Vocational College of Bioengineering, Fuzhou 350007, China

### ARTICLE INFO

#### Review

#### Article history:

Received: September 10, 2022

Accepted: November 16, 2022


Published: November 30, 2022

#### Keywords:

SCI, multi-omics analysis, diagnosis and treatment strategy

### ABSTRACT

A spinal cord injury (SCI) can result in varying degrees of limb movement impairment and sensory impairment, affecting the quality of life severely. The study of the molecular mechanisms underlying SCI disease has advanced greatly. However, there is still room for improvement in terms of the cognitive and systematic approaches used for disease diagnosis, progression, treatment, and prognosis. This situation might change as multi-omics technology advances. Single omics technology has some limitations when it comes to fully comprehending the disease progression pattern and directing SCI treatment. Therefore, a thorough understanding of the state of the art in omics research on SCI can explain the pathogenesis and mechanism of the disease and offer new, multifaceted treatments for SCI. This article reviews recent developments in the application of various omics techniques to diseases associated with SCI and discusses the advantages and disadvantages of using these techniques for disease diagnosis, prognosis, and treatment.

Doi: <http://dx.doi.org/10.14715/cmb/2022.68.11.11>Copyright: © 2022 by the C.M.B. Association. All rights reserved. 

### Introduction

A severe condition that damages the CNS, SCI frequently results in motor and sensory dysfunction, impairs mobility, and has a detrimental impact on quality of life. The prevalence of spinal cord injuries is increasing as the population ages and the number of traffic accidents rises. More than 27 million people worldwide have spinal cord injuries that have left them disabled(1). In China, there are 66.5 spinal cord injuries for every million people(2). The high SCI disability rate presents a challenge for clinical and basic research, and as the patient population grows, so does the financial burden on families and society. Currently, early surgical decompression followed by anti-inflammatory drugs and the stimulation of nerve regeneration is the main treatments for spinal cord injuries(3). Exosomes, recombinant adenovirus, stem cells, and other novel treatments are currently being researched and developed(4,5). The development of Omics techniques may open up new avenues for the treatment of SCI. Omics-related detection and analysis techniques are improving as a result of advancements in modern science and technology. Omics techniques can offer more thorough and quick diagnostic indicators for SCI during the preliminary diagnosis process, shorten the time it takes to confirm the diagnosis, increase the accuracy of the diagnosis, offer patients an earlier and better course of treatment, and offer a prognosis for SCI. Omics techniques can offer new therapeutic targets and concepts for SCI, which researchers can investigate in the future in terms of treatment (6). In order to provide new references for the diagnosis and treatment of SCI, we review the research progress of various Omics techniques in the diagnosis,

prognosis, and treatment of SCI and highlight the viability of Omics techniques in the diagnosis and treatment process of SCI.

### Genomics

The study of all genes in an organism is possible through genomics, and choosing an appropriate animal model can help to more accurately simulate SCI and serve as a guide for future neurological repair. Due to their capacity to completely repair spinal cord tissue that has been transected, adult zebrafish are frequently used in research on spinal cord injuries(7). Additionally, Shen's team(8) collected spinal cord tissue from zebrafish two weeks after SCI, identified the genome and compared it with the gene pool of mature spinal cord-injured zebrafish. An important area of genomics called epigenomics focuses on reversible, inheritable, and genomic changes that do not involve DNA sequences(9). DNA methylation,

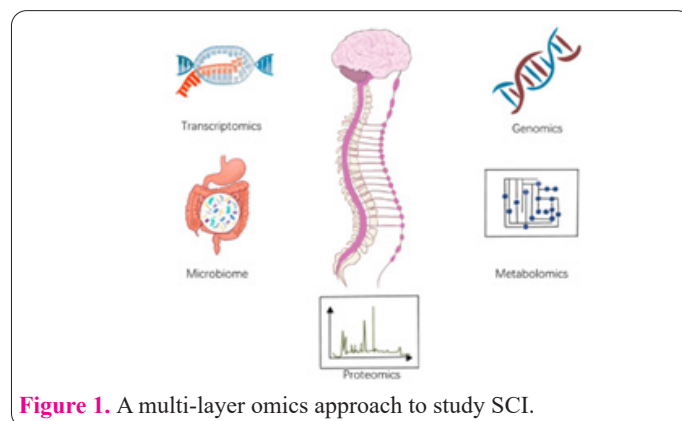


Figure 1. A multi-layer omics approach to study SCI.

\* Corresponding author. Email: zhanglil62@163.com

Histone modification, and other common epigenetic modifications are examples. According to research on spinal cord injuries, genes' capacity for transcription and expression heavily influences how quickly the nervous system can heal(10). Researchers focus on the epigenome, which has the ability to change the chromatin state, which has grown recently. According to earlier research, histone acetylation is a potential therapeutic approach to improve axonal regeneration(11). DNA methylation has also been suggested to play a significant role in both proliferation and differentiation of neural stem cells, and neuronal cells(12). Shi(13) used whole genome bisulfite sequencing and methylated DNA immunoprecipitation sequencing to screen and compare the two groups of differentially methylated genes, and then performed biological analysis. Core genes were discovered, including Dnm3, Ntrk3, Smurf1, Dpysl2, Kalrn, and Shank1, as well as signaling pathways like the Hippo signaling pathway and the Endocytosis pathway. Axon guidance, endocytosis, T cell receptor signaling, and Hippo signaling were the four pathways where DNA methylation was most concentrated, according to research done by some teams on rats with SCI (14). These recently discovered target genes might represent a fresh avenue for treating and diagnosing SCI. Another team also concluded that 5-methylcytosine (5mC) and 5-hydroxymethylcytosine(5hmC) could not be distinguished using conventional DNA methylation detection methods (15). The genome-wide analysis of DNA at the 5hmC level revealed that 5mC and 5hmC have distinct functions in the axonal regeneration of spinal cord injured neurons. It also revealed that genes with a significant change in DNA methylation are new therapeutic targets and potential injury mechanisms in SCI. Exercise rehabilitation is a common form of treatment for people with spinal cord injuries. With the help of epigenomic theories, exercise training can enhance the functional recovery of SCI by raising the levels of 5mC and 5hmC(16). UTX/Mir-24 has been demonstrated to inhibit NeuroD1 expression in the form of epigenetic complexes in response to known epigenomic studies of SCI(17). This limits the capacity of SCI neurons to regenerate, and UTX may emerge as a key target for the treatment of SCI.

## Transcriptomics

A cell, tissue, or group of organisms' entire RNA assembly is known as its transcriptome. The importance of transcriptome analysis is to quantify the expression of genes in cells, tissues, organs, etc. while capturing the specificity of gene expression in coding and non-coding regions of RNA. This analysis establishes a framework for reconstructing genetic interaction networks(18,19) and offers the first step in functional characterization and annotation of genes or genomes previously revealed by DNA sequencing. Coding region RNA and non-coding region RNA are the two primary types of RNA, and non-coding region RNA are further divided into long-stranded non-coding RNA and microRNA, both of which have recently been proposed to play a crucial role in the development of SCI disease(20,21).

Through the use of transcriptomics techniques, it was discovered that a number of RNAs showed abnormalities in SCI(22) and that these differentially expressed genes were primarily enriched in the neurotrophin TRK receptor

signaling pathway, which indirectly suggested that the neurotrophin TRK receptor signaling pathway may be involved in the start of neurological regeneration. LncRNA and miRNA can be used to diagnose SCI, just like other RNAs. Ding et al study(23) revealed the expression profile of lncRNAs in the spinal cord of a complete transection model rat and proposed that lncRNAs may be crucial in the early immune-inflammatory response after SCI. Additionally, the ceRNA hypothesis's formulation has opened up new opportunities for the study of transcriptomics. Eight mRNAs associated with SCI were found by Gong et al.(24) in the ceRNA network, and RGD1564534 may function as a ceRNA to control the expression of these eight SCI-associated miRNAs by competitively interacting with miR-29b-5p. Additionally, lncRNAXR 350851 may regulate SCI autophagy and may be a potential new marker and therapeutic target for SCI, according to the ceRNA hypothesis.

The use of peripheral blood cells in the diagnosis of patients with metal injuries for which MRI is contraindicated has a special advantage in the case of hyperacute spinal cord injuries. This is so because it is simple to collect peripheral blood cells, which express about 80% of the human genome's genes. According to a related study, mice's peripheral blood contained altered levels of certain miRNAs, including miR-30b-5p, miR-152-3p, miR-200c-3p, miR-125b, and miR-124-3p, both before and after injury(25). This information is extremely helpful in the diagnosis of hyperacute SCI. After 2 hours of injury, the analysis showed that differentially expressed genes were enriched in the toll-like receptor signaling pathway, p53 signaling pathway, MAPK signaling pathway, and Jak-STAT signaling pathway. LncRNA expression was highly dynamic at various stages of SCI. In the event of an immediate SCI, IL6, MBOAT4, FOS, TNF, JUN, STAT3, CSF2, MYC, CCL2, and FGF2 may be crucial targets(26). Similar to this, two days after SCI, differential transcriptome assays were carried out in mice, and the top 10 core genes identified by the PPI network were IL6, TNF, and MYC(27). The results obtained two hours after the injury are both the same and different from this, and comparing the differences between the two can aid in the identification of an early SCI. By comparing differentially expressed genes at three different time points after SCI, at 1, 4, and 7 days, Gong et al.'s research(28) demonstrated that SCI is a process of continuous transformation of an inflammatory transcriptome into an apoptotic, self-healing transcriptome. Interestingly, pathways and genes essential to the pathology of spinal cord injuries were discovered by sequencing tissue samples from acute and subacute spinal cord injuries(29). The most enriched functional categories were "inflammatory response," "neurological disease," "cell death and survival," and "neurological development," which also support one another.

Spinal cord regeneration studies frequently involve the neurorenewable zebrafish. Specialized glial cells are present in adult zebrafish that spontaneously restore spinal cord damage by growing a regenerative bridge over the damaged tissue. Mammals are incapable of having this. The epithelial-mesenchymal transition and E2F4 gene programs are activated by SCI in zebrafish, according to transcriptomic studies. The results of additional research on bridging glial cells will then serve as a platform for translational applications to enhance bridging and CNS

regeneration in mammals(30,31). Successful regeneration in rodents depends on the regenerative transcriptome profile remaining active continuously throughout the regeneration process. For the first two weeks, the transplantation group's transcriptomic response was nearly identical to that of the SCI-only group in terms of corticospinal axon regeneration. The transcriptome in the injury-only group, however, is downregulated after two weeks, whereas it is maintained in the transplantation group(32). The central hub of the regenerative transcriptome is the huntingtin gene, a transcriptional regulator linked to corticospinal regeneration, and mutations in Htt can impair neuronal repair mechanisms(33). A favorable microenvironment for neurogenesis and the restoration of fully transected spinal cord function is provided by the neurotrophin-3 (NT3)-loaded chitosan, which has been shown through transcriptome analysis to be essential for the spinal cord's regenerative effects(34). After SCI, apoptosis is also unavoidable, and ZBTB38 overexpression significantly increases RB1CC1, a crucial element of the spinal cord's autophagy initiation mechanism, promoting autophagy and partially reversing secondary damage(35). Similar to this, increased miRNA-21 expression levels following SCI may aid in spinal cord repair by inhibiting the expression of its target gene, PDCD4(36). Montazeri et al.(37)'s discovery that neurotrophic factor was highly expressed after SCI in terms of the beginning of neurological repair suggests that the neurotrophin TRK receptor signaling pathway may be involved at the beginning of neurological regeneration and that the function of the p75 neurotrophin receptors to kill injured cells by inducing apoptotic mechanisms. These findings all point to new directions for SCI treatment research.

## Proteomics

Because it can thoroughly examine all the protein characteristics of a specific biological sample over a specific period and allow monitoring changes in protein expression under various circumstances, proteomics is frequently used in the search for disease biomarkers, new therapeutic targets, and treatment plan optimization. It is challenging to diagnose, predict, and treat diseases solely based on genetic information in practical genetic information technology applications because proteins are frequently impacted at the transcriptional and translational levels by post-translational modifications, protein heterodimerization, etc. Because proteins are more closely related to biological functions than genetic information, proteomics is a potent complement to genomics and transcriptomics and has been shown to be effective(38–45).

Studies on SCI have frequently used proteomics(46). Biomarkers for diseases related to SCI can be discovered by comparing samples with normal samples. Ding et al(47). conducted proteomic analysis on rats 5 days after SCI and identified 30 upregulation proteins represented by 11-zinc finger protein and Glypic. While Liu and his team subjected 9 female Wistar rats to SCI strikes and 7 days later compared them with the sham-operated group using iTRAQ labeling, and LC-MS/MS techniques for proteome comparison identified 10 significantly different biomarkers represented by complement c(48), compared to these findings, 220 differential proteins, including 3 heat shock proteins, were found in the spinal cord tissue proteome of

rats after the 8-hour acute phase of injury in comparison to the normal group of rats(49). During the 24-hour acute phase, a total of 108 differential proteins—including 16 significant differential proteins—were discovered(50). These distinctive proteins could serve as key indicators of diseases related to spinal cord injuries. Proteins in the human body exhibit partial differences at various injury times, and the appearance of these differential proteins can serve as a guideline for determining how SCI disease progresses. After performing a proteomic analysis on mouse spinal cord tissues at weeks 1, 2, 3, and 8 following SCI, Ding et al(51). came to the conclusion that 9 out of 29 significantly different proteins were involved in the disease process. They also noted that the proteomic differences between the spinal cord-injured mice and the sham-operated group shrank as the disease improved, as previously reported in studies(52), in order to be able to regenerate after an SCI, the CNS exhibits strong proteomic differences. By 5 days or later, the damaged spinal cord tissue starts to adjust to this pathological environment and reaches homeostasis. By extending the time for SCI testing to 8 weeks(53), the number of different proteins that are consistently increased or decreased can reach 40 and 48, respectively. Analysis of these differential proteins can identify proteins with the potential to be drug targets in SCI, which opens up new avenues for future drug research for the treatment of SCI. Could a more accessible and safe sample source be used, even though proteomic analysis of cerebrospinal fluid from patients at various stages of injury may produce noticeably different proteins that offer intervention pathways or small molecules for later treatment of SCI(54). This was confirmed by Zhang's team(55), whose proteomic analysis of the erythrocytes from beagle dogs suffering from the acute and subacute phases of SCI and validation of the mass spectrometry results not only revealed 26 differential proteins but also suggested that erythrocytes might be a source of samples for biological markers of oxidative stress in SCI. The team of Moghieb and Lubieniecka(56,57) collected spinal cord tissues and cerebrospinal fluid from moderate and severe SCI rat models for differential proteomic analysis. Proteomics technology will also help establish quantitative and objective biomarkers to gauge SCI severity, which will lead to more precise SCI treatment options. While using SCI patients as the sample source(58,59). They identified TF, FASN, NME1, and various biomarkers that can determine the severity of SCI represented These protein markers that indicate the severity of SCI may also suggestively contribute to the prediction of disease prognosis. Using this feature in conjunction with a machine learning strategy, a prognostic model was created that can predict an improvement in AIS grading after six months.

Post-translational modifications play a significant role in the expression of protein functions in addition to normal protein expression. In addition to identifying early post-translational modifications of proteins after SCI in rats(60), blood-related proteins, heat-shock proteins, glycolytic enzymes, etc., have been shown to be significantly affected by protein phosphorylation(61). Researchers may be able to gain insight into disease mechanisms by studying the changes in these proteins following SCI. A common secondary condition of SCI is neurological inflammation. Identifying the pathological mechanism of neuroinflammation and developing effective

interventions are key steps in improving SCI. Proteomic and transcriptomic data suggest that the lysosome pathway, cholesterol metabolism, and the complement and coagulation cascades are critical pathways for SCI progression. It has also been shown that sequential upregulation of protein clusters at acute and subacute time points after SCI is associated with myeloid cells and immune responses, lipid regulation, and lysosome pathways that may contribute to the neuroinflammatory response following SCI (62). Didangelos(63) also demonstrated that persistent overexpression of extracellular alarmins could trigger inflammation through pattern recognition receptors by targeting a combination of abundant extracellular proteome and transcriptomics after SCI.

The use of proteomics in SCI is not just restricted to diagnosis and prognosis; it can also be very helpful in guiding treatment decisions and fostering the investigation of novel therapeutic approaches for prediction. Mesenchymal stem cells have been demonstrated to be effective in treating SCI(64). Extracellular vesicles, one of the most significant MSC mediators, have been demonstrated to reduce apoptosis, reduce the inflammatory response, and promote angiogenesis, all of which have been shown to improve SCI(65). Specifically, through the regulation of apoptosis and inflammation, MSCs-EVs can be directed to the injured spinal cord tissue when used for SCI treatment, and 883 differential proteins can be identified when proteomics is applied(66). MSCs-EVs pre-treated with melatonin was found to promote better recovery after SCI(67), and after proteomic analysis was conducted, Ubiquitin-specific protease 29 expression was significantly elevated, allowing further research to establish its probable mechanism of action, in order to formulate more valuable methods for the treatment of SCI. Unlike mammals, some animals have the ability to repair and regenerate nerves in close association with age(68-72) and this can provide insight into ways to improve recovery from SCI. When *Xenopus* regenerative and non-regenerative SCI models of *laevis* were quantitatively detected by proteome(73), 172 were in the regenerative phase and 240 in the non-regenerative phase. As with *Xenopus laevis*, *Monodelphis domestica* also exhibits age-related CNS repair functions and has significant effects on a postnatal day 5 and postnatal day 18 (Proteomic analysis of spinal cord tissues of *Monodelphis domestica* from P18)(74) showed significant differences in proteins associated with neurodegenerative diseases. According to the six differential proteins related to CNS development, the Glial fibrillary acidic protein, Paired box protein Pax-6, Growth associated protein 43, Myelin basic protein and Brain lipid-binding protein content of P18 is greater than that of P5, Paired box protein Pax-2 is the opposite. Injury treatment in the *Monodelphis domestica* T10 spinal cord at P7 and P28. A total of 56 differentially regulated proteins associated with SCI were identified at 1 and 7 days after injury and compared with the corresponding age control group(75). Interestingly, 14-3-3 epsilon, 14-3-3 gamma, cofilin, alpha-enolase, heart fatty acid binding protein, brain fatty acid binding protein, and ubiquitin were differentially expressed with age. At the same time, P7 appears to have fewer protein and transcriptional changes in SCI(76), perhaps because the injury occurs during the regeneration of spinal cord tissue. The findings from regenerative animals have the potential to provide us with crucial information regarding

spinal cord regeneration and help us understand the mechanism of SCI repair. These differential proteins also provide us with effective therapeutic targets for future research. A spinal cord transection injury is more severe than a normal injury. In a proteomic analysis of SCT rats,  $\alpha$ -synuclein was significantly down-regulated (77) and the expression of Endoplasmic Reticulum Protein29 was significantly increased(78). As a result of the later verification of SNCA and ERp29, it was also discovered that inhibiting SNCA reduced the apoptosis of neuronal cells and promoted the recovery of motor function. In addition, ERp29 promotes motor neuron survival and axon regeneration, two differential proteins that may be therapeutic targets for SCI. In addition, eukaryotic translation initiation factor 5A1 was also highly expressed in the SCT model(79). In addition, inhibition of eIF5A1 expression slows functional recovery in rats with SCI. eIF5A1 overexpression increased the expression level of RhoGDI $\alpha$  as well. As a result, certain experiments have also demonstrated(80) that eIF5A1 upregulates RhoGDI $\alpha$  in neurons, thereby promoting neuronal regeneration in vitro. The eIF5A1/RhoGDI $\alpha$  pathway could be used as a new target for the treatment of spinal cord injuries by means of proteomics.

### Metabolomics

Since it was first proposed in 1998, metabolomics has developed into a well-established field of study that uses both qualitative and quantitative methods to examine metabolites with molecular weights less than 1000 that are present in cells, tissues, or biological samples at a specific point in time(81). Metabolomics, as opposed to proteomics and genomics, considers omics metabolites as end products and connects downstream phenotypes to upstream biological processes in transcriptomics, genomics, and proteomics(82). Because it can precisely and thoroughly describe the dynamic responses of biological organisms to environmental and genetic influences, metabolomics is frequently used to identify disease biomarkers, disease progression, and new therapeutic targets(83-87).

There are some challenges in the early diagnosis and treatment of SCI because there is no established biological decision-making mechanism. But the development of 1H NMR, mass spectrometry, and other metabolomics technologies offers a fresh perspective on the identification and management of SCI. YANG and his team(88) built four rat models of SCI with varying degrees of injury, and they collected samples of cerebrospinal fluid, plasma, and rat spinal cord tissue 72 hours after the onset of the disease for parallel studies. Their goal was to identify metabolic biomarkers of SCI in the subacute phase. These samples contained 14 metabolites, including uric acid, phosphorylcholine, guanidoacetic acid, and pyridoxine. The pathways phosphorylcholine, pyridoxine, and guanidoacetic acid displayed were strongly linked to SCI. Accordingly, a group of researchers(89) collected cerebrospinal fluid and serum samples from patients with various grades of SCI from ASIA at 24, 48, and 72 hours after injury for detection and analysis. They used differential chemical isotope labeling liquid chromatography-mass spectrometry with a Universal metabolome standard. The content of differential metabolites was positively correlated with the severity of SCI, meaning that the more serious

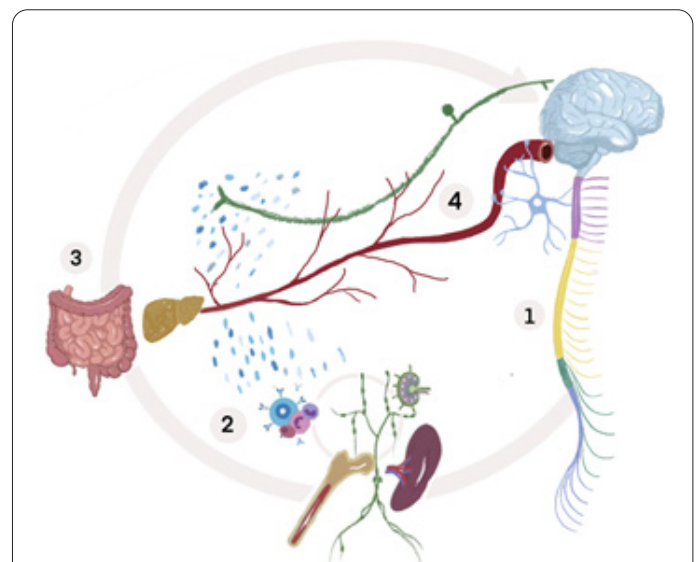
the disease injury, the higher the content of differential metabolites, which may be a potential marker of SCI severity. Six typical cerebrospinal fluid metabolites and one serum metabolite were determined after comparison between groups. Through metabolic analysis of plasma from rats with various levels of SCI(89,90), fatty acids, VLDL, LDL, triglyceride, 3-methyl-histamine, myc-inositoland arginine, as well as other metabolic markers represented by sp The metabolomic profile of SCI at the initial and long-term stages was determined and provided a potential biomarker profile for the prognosis of individual clinical treatment through the metabolome detection and statistics of human urine at different times(91).

Similar to the non-targeted metabolomics detection results mentioned above, changes in the lipidome in the body after SCI were particularly pronounced(92), the presence of the disease results in an apparent disorder of the body's metabolism of polyunsaturated fatty acids represented by DHA, and the expression of fatty acid-binding protein 5 was also impacted(93). In addition to the ability of FABPs to control the transport metabolism of polyunsaturated fatty acids, the intervention with FABP5 siRNA also hindered the restoration of motor function in SCI and the positive regulation of disease by DHA. Therefore, by regulating amino acid metabolism and associated free radical biochemical characteristics, prophylactically feeding a diet high in omega-3 polyunsaturated fatty acids can improve the recovery of autonomic nerves, sensation, and movement(94). Additionally, DHA deficiency after SCI is improved(95). In addition to a diet high in PUFAs, the ketogenic diet has gained popularity since metabolomics demonstrated that the lipidome of patients with spinal cord injuries was significantly affected. According to preliminary studies on neurological disorders, the ketogenic diet is thought to have a therapeutic effect on promoting nerve fiber repair, nerve protection, and reducing neuroinflammation(96). In rats with spinal cord injuries, the ketogenic diet has also been proposed to quickly raise ketone levels and enhance motor recovery(97). Intriguingly, Mayr and his team's experimental findings(98) revealed that while other monoamine metabolites did not change significantly compared to the control group after SCI, the levels of metabolites such as Tyrosine and Tryptophan decreased in rats given a ketogenic diet. More importantly, the ketogenic diet did not have a significant protective effect on SCI. Traditional Chinese medicine has emerged as a new field of study in modern medicine that is worth exploring. The study found that *Miltiorrhiza Salvia Bunge*, a widely used herbal remedy in clinical practice, had 51 metabolites and 6 major metabolic pathways identified after metabolomic assay(99), including arachidonic acid metabolism, which can be further investigated for the role of fatty acid/arachidonic acid metabolism in SCI. Additionally, the metabolome was examined and Licofelone was used to inhibit COX/ 5-Lox. In SCI, lipid metabolites were also noticeably decreased(100). This demonstrates that lipid metabolism plays a crucial role in the histological analysis of the metabolism following SCI. It is possible to gain a new understanding of the pathological mechanism underlying SCI through the study of metabolomics and the integration of related data. It is also possible to find new diagnostic markers and potential treatment targets.

## Microbiomics

The host immune system, a source of genetic diversity, and a crucial element affecting drug metabolism are all attributes of the microbiome(101). At the same time, the microbiome is gaining recognition for its capacity to control the physiological relationships and functions of almost all body organs and to help the host coordinate essential survival processes(102). Given the abundance of microbes in the gastrointestinal tract, it has emerged as a significant area of study and interaction between the microbiota and the host(103). The concepts of the CNS-gut axis, brain-gut axis, and spinal cord-gut-immune axis have also been proposed(101, 102, 104, 105). These concepts define the gut, spinal cord, and CNS as a bidirectional communication pathway, in which various signals related to SCI are interspersed. The sympathetic nerve is thought to be the primary mode of CNS innervation that controls the gastrointestinal nervous system. The regulation of intestinal sympathetic nerves, gut-associated lymphoid tissue, intestinal movement, intestinal epithelial permeability, etc., affects the normal function of the gut microbiota either directly or indirectly. Sympathetic nerve damage after SCI causes a number of terrible effects on the gastrointestinal system. Studying the changes in microbiomics after SCI and its reverse effects on the human body has also become a new focus as the significance of the gut microbiome on host physiological function and overall health is recognized, such as dysregulation of the gut microbiota, which can greatly affect the neurological function, host immune function, overall health, and quality of daily life of SCI patients(106,107).

Due to the highly conserved nature of the 16S



**Figure 1.** CNS-gut axis (105): The connections between the nervous system, immune system, and gastrointestinal system are abnormally affected by SCI (SCI)1. SCI results in a decrease in the sympathetic nervous system's ability to control the body. As a result, there is a reduction in the physiological regulation of hematopoiesis (bone marrow and spleen) and immune surveillance (bone marrow, spleen, lymph nodes, and gastrointestinal tract-associated lymphoid tissue/GALT)2. Immune dysfunction and dysregulation of the gut ecosystem are brought on by this endostasis disruption3. The vagus nerve is activated or metabolites and cytokines produced by gut microbes and cells enter the bloodstream, affecting the structure and operation of the CNS through the CNS-gut axis4.

ribosomal RNA gene and its biological uniqueness, 16S rRNA sequencing has become a popular method for identifying the variety of bacterial communities present in the human gut(108). The 30S subunit of the ribosome in prokaryotes contains the 16S rRNA(109). The 16S rRNA gene sequence is roughly 1550 bp long and is made up of variable and conserved regions. Its high conservation status is thought to be one of the primary justifications for the use of 16S rRNA as a target for the detection of the human microbiome(110). A similar effect was observed when gut microbiota was studied in SCI patients. SCI has been shown to affect the composition of the gut microbiota in experimental animals(111), and many bacteria can only return to normal levels after SCI fluctuations in the acute phase(112). It has been demonstrated that the gut microbiota of SCI patients differed from the healthy population's in terms of microbial community structure and quantity(113). Additionally, there may be a connection between serum markers, neurogenic bowel dysfunction, cardiovascular disease, and metabolic disorders and dysregulation of the gut microbiota(114,115). Likewise, the gut microbiota of patients with various types of SCI bowel dysfunction, such as upper motor neuron bowel syndrome and lower motor neuron bowel syndrome, differs(116). These differences can be used as a guide for the early diagnosis of SCI. Patients with different degrees of injury and patients at different stages of SCI(117) also have different bacterial community characteristics, on the assumption that SCI patients show significant dysregulation of gut microbiota. Patients with complete SCI exhibit more severe gut microbiota dysbiosis than patients with incomplete SCI (ITSCI)(118). This difference is thought to play a role in the development of other diseases, such as inflammatory responses, and is closely related to the integrity and severity of the disease(119). These studies offer a strong foundation for the use of microbiomics in clinical practice.

When treating SCI, it was discovered in a therapeutic study that some therapeutic techniques, including melatonin, electroacupuncture, and minocycline, also regulate the microbiota(120,121). This might offer a fresh concept and treatment objective for SCI. Can the control of the gut microbiota's health status slow the progression of SCI and serve as a therapeutic tool? Fecal transplantation(122) is the most direct method of enhancing the gut microbiota because it not only enhances the gastrointestinal tract's motor function and barrier integrity but also encourages the regeneration of neuronal axons and the restoration of motor function in SCI rats(123). Additionally, a more tolerable probiotic therapy can reduce urinary tract infections and urinary tract flora in patients(124), as well as positively regulate gut microbiota by stimulating immune-related cells in the gut-associated lymphoid tissue, which in turn protects the nervous system and aids in associated motor recovery(125). All of these studies demonstrate that improving gut microbiota and gut function health status as adjunctive therapy(126) can effectively halt the progression of SCI disease and aid in the recovery of related functions.

To characterize or quantify various molecules, such as DNA, RNA, microbiota composition, protein types, etc., as well as to categorize SCI into various subtypes and disease stages, various high-throughput sequencing technologies can be used. As a result, it is now possible to not only better understand SCI and pinpoint the disease's

stage of development, but also to provide patients with more targeted interventions and treatments for various disease types. There are still some restrictions despite the excellent clinical prediction ability to discover new biomarkers using omics techniques. The outcomes of the current experiments cannot be directly translated to the clinic. Therefore, we must continue to conduct multicenter, standardized, and larger-scale clinical trials to improve the applicability of omics techniques to the diagnosis and course assessment of SCI in order to improve the clinical diagnosis of SCI by biomarkers. Although omics techniques have made great strides to date and there is a lot of data available, there is still a lot of information to learn. The way to translate omics techniques from laboratory studies to real-world clinical applications is through the validation of the results and a more standardized and rigorous scientific experimental method. Databases and multi-omics may work well together as a solution. The joint use of multi-omics is a trend in the advancement of omics techniques, even though the integration of multi-omics and datasets is still a challenge. Diversified data integration can improve the quality and quantity of big data, remove the constraints imposed by a single technology in the diagnosis and treatment of disease, aid in the investigation of the etiology of SCI, and create personalized disease treatment approaches. As a result, we will be able to better understand the disease process and choose the best treatment option for patients to aid SCI recovery as omics techniques continue to advance.

## Funding

The research is supported by: The National Natural Science Foundation of China. Study on the effect of blood activation method on the repair of blood-spinal cord barrier damage and its mechanism. (No. 82074474(to ZL)).

## References

1. GBD 2016 Traumatic Brain Injury and Spinal Cord Injury Collaborators. Global, regional, and national burden of traumatic brain injury and spinal cord injury, 1990-2016: a systematic analysis for the Global Burden of Disease Study 2016. *Lancet Neurol.* 2019 Jan;18(1):56-87. doi: 10.1016/S1474-4422(18)30415-0. Epub 2018 Nov 26. Erratum in: *Lancet Neurol.* 2021 Dec;20(12):e7. PMID: 30497965; PMCID: PMC6291456.
2. Shinozaki M, Nagoshi N, Nakamura M, Okano H. Mechanisms of Stem Cell Therapy in Spinal Cord Injuries. *Cells.* 2021 Oct 6;10(10):2676. doi: 10.3390/cells10102676. PMID: 34685655; PMCID: PMC8534136.
3. Khlar-Fernández N, Zian D, Vázquez-Villa H, Martínez RF, Escobar-Peña A, Foronda-Sainz R, Ray M, Puigdomenech-Poch M, Cincilla G, Sánchez-Martínez M, Kihara Y, Chun J, López-Vales R, López-Rodríguez ML, Ortega-Gutiérrez S. Novel Antagonist of the Type 2 Lysophosphatidic Acid Receptor (LPA2), UCM-14216, Ameliorates Spinal Cord Injury in Mice. *J Med Chem.* 2022 Aug 25;65(16):10956-10974. doi: 10.1021/acs.jmedchem.2c00046. Epub 2022 Aug 10. PMID: 35948083; PMCID: PMC9421655.
4. de Freria CM, Van Niekerk E, Blesch A, Lu P. Neural Stem Cells: Promoting Axonal Regeneration and Spinal Cord Connectivity. *Cells.* 2021 Nov 25;10(12):3296. doi: 10.3390/cells10123296. PMID: 34943804; PMCID: PMC8699545.
5. Martin-Lopez M, Fernandez-Muñoz B, Canovas S. Pluripotent

**Table 1.** Typical biomarkers of SCI found by multi-omics.

References	Subjects	Sample/Methods	Significant Biomarkers	
			Up	Down
Shi,et al.(13) (Gene)	Wistar rats with SCI (n=6) and Laminectomy group (n=6)	Spinal Ccord tissue/WGBS	Smurf1,Shank1,Arsb, Dpysl2,Map6,Htr7	Kalrn,Dnm3,Dlg2, Tenm2,Numbl,Prickle2, Bmp5,Lmx1a, Ntrk3,Rein Sdha,Uqrcr2, Ndufa5, Atp5b, Atp5a1 and Cox5a
Yang,et al(127) (Gene)	Gene Expression Omnibus	Bioinformatics		
Wang,et al(22) (Gene)	Healthy controls(n=5) and patients with ISCI (n=10) and CSCI(n=10)	Peripheral blood/The Illumina HiSeq high-throughput sequencing platform	CDK16,BAD,MAP2K2,EGR	EPHA4,RHOB
Ding,et al(23) (Gene)	SD rats healthy controls (n=12) and SCI group (n=12)	Spinal Ccord tissue/The Illumina HiSeq	H19,Vofl6,Hmox2-ps1,LOC100910973,Ybx1-ps3,Nnat,Gcgr,LOC680254	Rmrp,Terc,Ngrn,Ppp2r2b,Cox6a2,Rpl37a-ps1,LOC360231, Rpph1 nonratt027883, 023477, 029520, 020419, 013439, 015190, 020882, 020279, 009500, 011215
Zhou,et al(26) (Gene)	SD rats control group(n=9) and SCI group(n=9)	Spinal Ccord tissue/Microarray analysis	nonratt009530, 002354, 027672, 006315, 030938, 018585, 001250, 006614, 008294, 022586	
Liu,et al(48) (Protein)	Female Wistar rats control group (n=9) and SCI group (n=9)	Spinal Ccord tissue/iTRAQ labeling, and LC-MS/MS	Lyz1, Kng1, Orm1, Apoe, Fabp4, Lgals3, Kng2, Vim, Ctsb, Hexb	Gat3, Atp1a2, Atp1b2, Ina, Sncb, Slc6a1, Tst, Map2, Syt2, Slc4a4
Chen,et al(50) (Protein)	Long-Evans rats control group (n=9) and SCI group (n=9)	Spinal cord tissue/iTRAQ labeling, and LC-MS/MS	p01946, p02091, p11517, p02770, p10860, p62989, p63012, p27139, p48199, p12346	p47819, q4qrb4, p02688, p09117, p11442, q6ay84,
Ding,et al (51)* (Protein)	Female mice control group (n=15) and SCI group (n=15)	Spinal cord tissue/iTRAQ labeling	Hist1h1c, S100a10, S100a6.	Hist1h1e, Hbb-b1, Hbb-bs, Hba, Ca1, Apoa4
Moghieb,et al (56)* (Protein)	Fischer rats Naive, sham(4 h, 24 h, 7 day n=15), moderate SCI(4 h, 24 h, 7 day n=15), severe SCI(4 h, 24h, 7d n=15)	Spinal Ccord tissue, Cerebrospinal fluid/CAX-PAGE and LCMS/MS	TF, FASN, NME1, CTSD, ANXA1, ANXA2, TPI-1	STMN1, PGM1, PEA15.
Lubieniecka,et al(57)** (Protein)	Sprague Dawley rats sham control (n=12), moderate injury (n=12), severe (n=3)	Cerebrospinal fluid/LCMS/MS	Itih4, Gpx3, Pzp, Car1, MGC72973, Orm1, S100a8, Prdx2, Car2, RGD1564861	
TOMLJANOVIĆ I,et al (74) (Protein)	Monodelphis domestica P5 and P18	Spinal Ccord tissue / Nano-HPLC-MS/MS	GFAP,PAX6,GAP43,MBP,BLBP	PAX2
Yang,et al(85)** (Metabolites)	Female SD rats sham, light injury, moderate injury, and heavy injury groups (n=6)	CSF, plasma, and spinal cord tissue / UHPLC-HRMS	Citric acid, Glyceric acid, Creatine, 5-aminopentanoic acid, 3-hydroxyanthranilic acid, Stearic acid, Linoleic acid, 1-methylnicotinamide, 3,4-dihydroxyphenylacetaldehyde, N-acetylaspartylglutamic acid, Guanidoacetic acid, Phosphorylcholine, Uric acid, Pyridoxine dihydroxyphenylacetaldehyde, N-acetylaspartylglutamic acid, Guanidoacetic acid, Phosphorylcholine, Uric acid, Pyridoxine	
Wu,et al (86)** (Metabolites)	Acute SCI patients with baseline ASIA Impairment Scale (AIS) grades of A (n = 10), B (n= 12) and C (n= 8)	CSF, Serum samples/LC-MS	uridine, imidazoleacetic acid, methionine sulfoxide, arginine, cystathionine and homocarnosine, uridine, 4-hydroxyproline, N1,N12- diacetylspermine and glycyproline	
Peng,et al (87)** (Metabolites)	Male SD rats control (n=7), mild SCI (n=10), and severe SCI group (n =25)	Plasma samples/ <sup>1</sup> H-NMR	4-Hydroxybutyric acid, Choline, L-Arginine, L-Histidine, L-Methionine, Tyramine, L-Serine, L-Lactic acid, Malonic acid, Phosphocreatine, 3- Indolebutyric acid, 3-Methylhistamine, Putrescine, Urea, Inosine	
Doelman,et al (108) (Microbial)	Female Yucatan pigs Control (n = 9), SCI (n = 8), Diet (n = 3) and Antibiotics (n = 3)	Fecal sample/ 16sRNA sequence	Proteobacteria, Tenericutes, Epsilonbacteraeota, Cyanobacteria	Firmicutes, Bacteroidetes, Spirochaetes

- Stem Cells for Spinal Cord Injury Repair. *Cells*. 2021 Nov 27;10(12):3334. doi: 10.3390/cells10123334. PMID: 34943842; PMCID: PMC8699436.
6. Lacroix V, Cassard A, Mas E, Barreau F. Multi-Omics Analysis of Gut Microbiota in Inflammatory Bowel Diseases: What Benefits for Diagnostic, Prognostic and Therapeutic Tools? *Int J Mol Sci*. 2021 Oct 19;22(20):11255. doi: 10.3390/ijms222011255. PMID: 34681921; PMCID: PMC8537481.
  7. Popovich PG. Building bridges for spinal cord repair. *Cell*. 2012 Sep 14;150(6):1105-6. doi: 10.1016/j.cell.2012.08.025. PMID: 22980974.
  8. Shen WY, Fu XH, Cai J, Li WC, Fan BY, Pang YL, Zhao CX, Abula M, Kong XH, Yao X, Feng SQ. Identification of key genes involved in recovery from spinal cord injury in adult zebrafish. *Neural Regen Res*. 2022 Jun;17(6):1334-1342. doi: 10.4103/1673-5374.327360. PMID: 34782579; PMCID: PMC8643032.
  9. Wang KC, Chang HY. Epigenomics: Technologies and Applications. *Circ Res*. 2018 Apr 27;122(9):1191-1199. doi: 10.1161/CIRCRESAHA.118.310998. PMID: 29700067; PMCID: PMC5929475.
  10. Palmisano I, Di Giovanni S. Advances and Limitations of Current Epigenetic Studies Investigating Mammalian Axonal Regeneration. *Neurotherapeutics*. 2018 Jul;15(3):529-540. doi: 10.1007/s13311-018-0636-1. PMID: 29948919; PMCID: PMC6095777.
  11. El-Hashash AHK. Histone H3K27M Mutation in Brain Tumors. *Adv Exp Med Biol*. 2021;1283:43-52. doi: 10.1007/978-981-15-8104-5\_3. PMID: 33155136.
  12. Jobe EM, Zhao X. DNA Methylation and Adult Neurogenesis. *Brain Plast*. 2017 Nov 9;3(1):5-26. doi: 10.3233/BPL-160034. PMID: 29765857; PMCID: PMC5928553.
  13. Shi G, Zhou X, Wang X, Zhang X, Zhang P, Feng S. Signatures of altered DNA methylation gene expression after central and peripheral nerve injury. *J Cell Physiol*. 2020 Jun;235(6):5171-5181. doi: 10.1002/jcp.29393. Epub 2019 Nov 6. PMID: 31691285.
  14. Shi GD, Zhang XL, Cheng X, Wang X, Fan BY, Liu S, Hao Y, Wei ZJ, Zhou XH, Feng SQ. Abnormal DNA Methylation in Thoracic Spinal Cord Tissue Following Transection Injury. *Med Sci Monit*. 2018 Dec 8;24:8878-8890. doi: 10.12659/MSM.913141. PMID: 30531681; PMCID: PMC6295140.
  15. Madrid A, Borth LE, Hogan KJ, Hariharan N, Papale LA, Alisch RS, Iskandar BJ. DNA methylation and hydroxymethylation have distinct genome-wide profiles related to axonal regeneration. *Epigenetics*. 2021 Jan;16(1):64-78. doi: 10.1080/15592294.2020.1786320. Epub 2020 Jul 7. PMID: 32633672; PMCID: PMC7889172.
  16. Davaa G, Hong JY, Kim TU, Lee SJ, Kim SY, Hong K, Hyun JK. Exercise Ameliorates Spinal Cord Injury by Changing DNA Methylation. *Cells*. 2021 Jan 12;10(1):143. doi: 10.3390/cells10010143. PMID: 33445717; PMCID: PMC7828206.
  17. Guo Z, Li C, Cao Y, Qin T, Jiang L, Xu Y, Li M, Luo Z, Hu J, Lu H. UTX/KDM6A deletion promotes the recovery of spinal cord injury by epigenetically triggering intrinsic neural regeneration. *Mol Ther Methods Clin Dev*. 2020 Dec 10;20:337-349. doi: 10.1016/j.omtm.2020.12.004. PMID: 33553483; PMCID: PMC7820127.
  18. Wang J, Wang Y, Gu W, Ni B, Sun H, Yu T, Gu W, Chen L, Shao Y. Comparative Transcriptome Analysis Reveals Substantial Tissue Specificity in Human Aortic Valve. *Evol Bioinform Online*. 2016 Jul 31;12:175-84. doi: 10.4137/EBO.S37594. PMID: 27493474; PMCID: PMC4968975.
  19. Jiang Z, Zhou X, Li R, Michal JJ, Zhang S, Dodson MV, Zhang Z, Harland RM. Whole transcriptome analysis with sequencing: methods, challenges and potential solutions. *Cell Mol Life Sci*. 2015 Sep;72(18):3425-39. doi: 10.1007/s00018-015-1934-y. Epub 2015 May 28. PMID: 26018601; PMCID: PMC6233721.
  20. Li Z, Ho IHT, Li X, Xu D, Wu WKK, Chan MTV, Li S, Liu X. Long non-coding RNAs in the spinal cord injury: Novel spotlight. *J Cell Mol Med*. 2019 Aug;23(8):4883-4890. doi: 10.1111/jcmm.14422. Epub 2019 May 29. PMID: 31140726; PMCID: PMC6653026.
  21. Wang T, Liu Y, Yuan W, Zhang L, Zhang Y, Wang Z, Zhou X, Zhou H, Chu T, Hao Y, Liu B, Zhao X, Lu L, Feng S, Kong X. Identification of microRNAome in rat bladder reveals miR-1949 as a potential inducer of bladder cancer following spinal cord injury. *Mol Med Rep*. 2015 Aug;12(2):2849-57. doi: 10.3892/mmr.2015.3769. Epub 2015 May 12. PMID: 25962430.
  22. Wang C, Lv H, Li Q, Gong K, Yang LL, Wei Z, Pan Y, Wang M. RNA Sequencing of Peripheral Blood Revealed that the Neurotropic TRK Receptor Signaling Pathway Shows Apparent Correlation in Recovery Following Spinal Cord Injury at Small Cohort. *J Mol Neurosci*. 2019 Jun;68(2):221-233. doi: 10.1007/s12031-019-01273-4. Epub 2019 Apr 16. PMID: 30993646.
  23. Ding L, Fu WJ, Di HY, Zhang XM, Lei YT, Chen KZ, Wang T, Wu HF. Expression of long non-coding RNAs in complete transection spinal cord injury: a transcriptomic analysis. *Neural Regen Res*. 2020 Aug;15(8):1560-1567. doi: 10.4103/1673-5374.274348. PMID: 31997824; PMCID: PMC7059563.
  24. Gong C, Liu L, Shen Y. Biomarkers mining for spinal cord injury based on integrated multi-transcriptome expression profile data. *J Orthop Surg Res*. 2021 Apr 16;16(1):267. doi: 10.1186/s13018-021-02392-8. PMID: 33863336; PMCID: PMC8051034.
  25. Kyritsis N, Torres-Espín A, Schupp PG, Huie JR, Chou A, Duong-Fernandez X, Thomas LH, Tsolinas RE, Hemmerle DD, Pascual LU, Singh V, Pan JZ, Talbott JF, Whetstone WD, Burke JF, DiGiorgio AM, Weinstein PR, Manley GT, Dhall SS, Ferguson AR, Oldham MC, Bresnahan JC, Beattie MS. Diagnostic blood RNA profiles for human acute spinal cord injury. *J Exp Med*. 2021 Mar 1;218(3):e20201795. doi: 10.1084/jem.20201795. PMID: 33512429; PMCID: PMC7852457.
  26. Zhou H, Shi Z, Kang Y, Wang Y, Lu L, Pan B, Liu J, Li X, Liu L, Wei Z, Kong X, Feng S. Investigation of candidate long noncoding RNAs and messenger RNAs in the immediate phase of spinal cord injury based on gene expression profiles. *Gene*. 2018 Jun 30;661:119-125. doi: 10.1016/j.gene.2018.03.074. Epub 2018 Mar 23. PMID: 29580899.
  27. Shi Z, Ning G, Zhang B, Yuan S, Zhou H, Pan B, Li J, Wei Z, Cao F, Kong X, Feng S. Signatures of altered long noncoding RNAs and messenger RNAs expression in the early acute phase of spinal cord injury. *J Cell Physiol*. 2019 Jun;234(6):8918-8927. doi: 10.1002/jcp.27560. Epub 2018 Oct 20. PMID: 30341912.
  28. Gong L, Lv Y, Li S, Feng T, Zhou Y, Sun Y, Mi D. Changes in transcriptome profiling during the acute/subacute phases of contusional spinal cord injury in rats. *Ann Transl Med*. 2020 Dec;8(24):1682. doi: 10.21037/atm-20-6519. PMID: 33490194; PMCID: PMC7812200.
  29. Chen K, Deng S, Lu H, Zheng Y, Yang G, Kim D, Cao Q, Wu JQ. RNA-seq characterization of spinal cord injury transcriptome in acute/subacute phases: a resource for understanding the pathology at the systems level. *PLoS One*. 2013 Aug 9;8(8):e72567. doi: 10.1371/journal.pone.0072567. PMID: 23951329; PMCID: PMC3739761.
  30. Klatt Shaw D, Saraswathy VM, Zhou L, McAdow AR, Burris B, Butka E, Morris SA, Dietmann S, Mokalled MH. Localized EMT reprograms glial progenitors to promote spinal cord repair. *Dev Cell*. 2021 Mar 8;56(5):613-626.e7. doi: 10.1016/j.devcel.2021.01.017. Epub 2021 Feb 19. PMID: 33609461;



- PMCID: PMC8044706.
31. Sasagawa S, Nishimura Y, Hayakawa Y, Murakami S, Ashikawa Y, Yuge M, Okabe S, Kawaguchi K, Kawase R, Tanaka T. E2F4 Promotes Neuronal Regeneration and Functional Recovery after Spinal Cord Injury in Zebrafish. *Front Pharmacol.* 2016 May 9;7:119. doi: 10.3389/fphar.2016.00119. PMID: 27242526; PMCID: PMC4860404.
  32. Poplawski GH, Tuszynski MH. Regeneration of Corticospinal Axons into Neural Progenitor Cell Grafts After Spinal Cord Injury. *Neurosci Insights.* 2020 Nov 24;15:2633105520974000. doi: 10.1177/2633105520974000. PMID: 33283187; PMCID: PMC7691939.
  33. Poplawski GHD, Kawaguchi R, Van Niekerk E, Lu P, Mehta N, Canete P, Lie R, Dragatsis I, Meves JM, Zheng B, Coppola G, Tuszynski MH. Injured adult neurons regress to an embryonic transcriptional growth state. *Nature.* 2020 May;581(7806):77-82. doi: 10.1038/s41586-020-2200-5. Epub 2020 Apr 15. PMID: 32376949.
  34. Duan H, Ge W, Zhang A, Xi Y, Chen Z, Luo D, Cheng Y, Fan KS, Horvath S, Sofroniew MV, Cheng L, Yang Z, Sun YE, Li X. Transcriptome analyses reveal molecular mechanisms underlying functional recovery after spinal cord injury. *Proc Natl Acad Sci U S A.* 2015 Oct 27;112(43):13360-5. doi: 10.1073/pnas.1510176112. Epub 2015 Oct 12. PMID: 26460053; PMCID: PMC4629389.
  35. Chen J, Yan L, Wang H, Zhang Z, Yu D, Xing C, Li J, Li H, Li J, Cai Y. ZBTB38, a novel regulator of autophagy initiation targeted by RB1CC1/FIP200 in spinal cord injury. *Gene.* 2018 Dec 15;678:8-16. doi: 10.1016/j.gene.2018.07.073. Epub 2018 Aug 1. PMID: 30075197; PMCID: PMC7379175.
  36. Jiang Y, Zhao S, Ding Y, Nong L, Li H, Gao G, Zhou D, Xu N. MicroRNA-21 promotes neurite outgrowth by regulating PDCD4 in a rat model of spinal cord injury. *Mol Med Rep.* 2017 Sep;16(3):2522-2528. doi: 10.3892/mmr.2017.6862. Epub 2017 Jun 27. PMID: 28656242; PMCID: PMC5548018.
  37. Montazeri F, Esmaili A, Miroliaei M, Moshtaghian SJ. Messenger RNA expression patterns of p75 neurotrophin receptor and tropomyosin-receptor-kinase A following spinal cord injury. *J Spinal Cord Med.* 2013 May;36(3):231-6. doi: 10.1179/2045772312Y.0000000077. PMID: 23809594; PMCID: PMC3654450.
  38. Streekstra EJ, Russel FGM, van de Steeg E, de Wildt SN. Application of proteomics to understand maturation of drug metabolizing enzymes and transporters for the optimization of pediatric drug therapy. *Drug Discov Today Technol.* 2021 Dec;39:31-48. doi: 10.1016/j.ddtec.2021.06.008. Epub 2021 Jul 6. PMID: 34906324.
  39. Qi F, Tan Y, Yao A, Yang X, He Y. Psoriasis to Psoriatic Arthritis: The Application of Proteomics Technologies. *Front Med (Lausanne).* 2021 Nov 16;8:681172. doi: 10.3389/fmed.2021.681172. PMID: 34869404; PMCID: PMC8635007.
  40. Geyer PE, Holdt LM, Teupser D, Mann M. Revisiting biomarker discovery by plasma proteomics. *Mol Syst Biol.* 2017 Sep 26;13(9):942. doi: 10.15252/msb.20156297. PMID: 28951502; PMCID: PMC5615924.
  41. Zhang Z, Wu S, Stenoien DL, Paša-Tolić L. High-throughput proteomics. *Annu Rev Anal Chem (Palo Alto Calif).* 2014;7:427-54. doi: 10.1146/annurev-anchem-071213-020216. PMID: 25014346.
  42. Li X, Wang W, Chen J. Recent progress in mass spectrometry proteomics for biomedical research. *Sci China Life Sci.* 2017 Oct;60(10):1093-1113. doi: 10.1007/s11427-017-9175-2. Epub 2017 Oct 13. PMID: 29039124.
  43. Cifani P, Kentsis A. Towards comprehensive and quantitative proteomics for diagnosis and therapy of human disease. *Proteomics.* 2017 Jan;17(1-2):10.1002/pmic.201600079. doi: 10.1002/pmic.201600079. Epub 2016 Dec 21. PMID: 27775219; PMCID: PMC5243792.
  44. Manes NP, Nita-Lazar A. Application of targeted mass spectrometry in bottom-up proteomics for systems biology research. *J Proteomics.* 2018 Oct 30;189:75-90. doi: 10.1016/j.jprot.2018.02.008. Epub 2018 Feb 13. PMID: 29452276; PMCID: PMC6089676.
  45. Zhu H, Bilgin M, Snyder M. Proteomics. *Annu Rev Biochem.* 2003;72:783-812. doi: 10.1146/annurev.biochem.72.121801.161511. PMID: 14527327.
  46. Albayar AA, Roche A, Swiatkowski P, Antar S, Ouda N, Emar E, Smith DH, Ozturk AK, Awad BI. Biomarkers in Spinal Cord Injury: Prognostic Insights and Future Potentials. *Front Neurol.* 2019 Jan 29;10:27. doi: 10.3389/fneur.2019.00027. PMID: 30761068; PMCID: PMC6361789.
  47. Ding Q, Wu Z, Guo Y, Zhao C, Jia Y, Kong F, Chen B, Wang H, Xiong S, Que H, Jing S, Liu S. Proteome analysis of up-regulated proteins in the rat spinal cord induced by transection injury. *Proteomics.* 2006 Jan;6(2):505-18. doi: 10.1002/pmic.200500296. PMID: 16372269.
  48. Liu S, Kang Y, Zhang C, Lou Y, Li X, Lu L, Qi Z, Jian H, Zhou H. Isobaric Tagging for Relative and Absolute Protein Quantification (iTRAQ)-Based Quantitative Proteomics Analysis of Differentially Expressed Proteins 1 Week After Spinal Cord Injury in a Rat Model. *Med Sci Monit.* 2020 Nov 4;26:e924266. doi: 10.12659/MSM.924266. PMID: 33144554; PMCID: PMC7650090.
  49. Zhou Y, Xu L, Song X, Ding L, Chen J, Wang C, Gan Y, Zhu X, Yu Y, Liang Q. The potential role of heat shock proteins in acute spinal cord injury. *Eur Spine J.* 2014 Jul;23(7):1480-90. doi: 10.1007/s00586-014-3214-1. Epub 2014 Feb 6. Erratum in: *Eur Spine J.* 2014 Jul;23(7):1582. PMID: 24499940.
  50. Chen A, Sun S, Ravikumar R, Visavadiya NP, Springer JE. Differential proteomic analysis of acute contusive spinal cord injury in rats using iTRAQ reagent labeling and LC-MS/MS. *Neurochem Res.* 2013 Nov;38(11):2247-55. doi: 10.1007/s11064-013-1132-y. Epub 2013 Aug 21. PMID: 23963509.
  51. Ding H, Yu J, Chang W, Liu F, He Z. Searching for differentially expressed proteins in spinal cord injury based on the proteomics analysis. *Life Sci.* 2020 Feb 1;242:117235. doi: 10.1016/j.lfs.2019.117235. Epub 2019 Dec 27. PMID: 31887301.
  52. Yan X, Liu J, Luo Z, Ding Q, Mao X, Yan M, Yang S, Hu X, Huang J, Luo Z. Proteomic profiling of proteins in rat spinal cord induced by contusion injury. *Neurochem Int.* 2010 Jul;56(8):971-83. doi: 10.1016/j.neuint.2010.04.007. Epub 2010 Apr 24. PMID: 20399821.
  53. Tica J, Bradbury EJ, Didangelos A. Combined Transcriptomics, Proteomics and Bioinformatics Identify Drug Targets in Spinal Cord Injury. *Int J Mol Sci.* 2018 May 14;19(5):1461. doi: 10.3390/ijms19051461. PMID: 29758010; PMCID: PMC5983596.
  54. Sengupta MB, Basu M, Iswarari S, Mukhopadhyay KK, Sardar KP, Acharyya B, Mohanty PK, Mukhopadhyay D. CSF proteomics of secondary phase spinal cord injury in human subjects: perturbed molecular pathways post injury. *PLoS One.* 2014 Oct 28;9(10):e110885. doi: 10.1371/journal.pone.0110885. PMID: 25350754; PMCID: PMC4211693.
  55. Zhang LJ, Chen Y, Wang LX, Zhuang XQ, Xia HC. Identification of potential oxidative stress biomarkers for spinal cord injury in erythrocytes using mass spectrometry. *Neural Regen Res.* 2021 Jul;16(7):1294-1301. doi: 10.4103/1673-5374.301487. PMID: 33318408; PMCID: PMC8284302.
  56. Moghieb A, Bramlett HM, Das JH, Yang Z, Selig T, Yost RA, Wang MS, Dietrich WD, Wang KK. Differential Neuroproteomic

- and Systems Biology Analysis of Spinal Cord Injury. *Mol Cell Proteomics*. 2016 Jul;15(7):2379-95. doi: 10.1074/mcp.M116.058115. Epub 2016 May 5. PMID: 27150525; PMCID: PMC4937511.
57. Lubieniecka JM, Streijger F, Lee JH, Stoyanov N, Liu J, Mottus R, Pfeifer T, Kwon BK, Coorsen JR, Foster LJ, Grigliatti TA, Tetzlaff W. Biomarkers for severity of spinal cord injury in the cerebrospinal fluid of rats. *PLoS One*. 2011 Apr 29;6(4):e19247. doi: 10.1371/journal.pone.0019247. PMID: 21559420; PMCID: PMC3084780.
  58. Streijger F, Skinnider MA, Rogalski JC, Balshaw R, Shannon CP, Prudova A, Belanger L, Ritchie L, Tsang A, Christie S, Parent S, Mac-Thiong JM, Bailey C, Urquhart J, Ailon T, Paquette S, Boyd M, Street J, Fisher CG, Dvorak MF, Borchers CH, Foster LJ, Kwon BK. A Targeted Proteomics Analysis of Cerebrospinal Fluid after Acute Human Spinal Cord Injury. *J Neurotrauma*. 2017 Jun 15;34(12):2054-2068. doi: 10.1089/neu.2016.4879. Epub 2017 Apr 7. PMID: 28276985.
  59. Streijger F, Skinnider MA, Rogalski JC, Balshaw R, Shannon CP, Prudova A, Belanger L, Ritchie L, Tsang A, Christie S, Parent S, Mac-Thiong JM, Bailey C, Urquhart J, Ailon T, Paquette S, Boyd M, Street J, Fisher CG, Dvorak MF, Borchers CH, Foster LJ, Kwon BK. A Targeted Proteomics Analysis of Cerebrospinal Fluid after Acute Human Spinal Cord Injury. *J Neurotrauma*. 2017 Jun 15;34(12):2054-2068. doi: 10.1089/neu.2016.4879. Epub 2017 Apr 7. PMID: 28276985.
  60. Afjehi-Sadat L, Brejnikow M, Kang SU, Vishwanath V, Walder N, Herkner K, Redl H, Lubec G. Differential protein levels and post-translational modifications in spinal cord injury of the rat. *J Proteome Res*. 2010 Mar 5;9(3):1591-7. doi: 10.1021/pr901049a. PMID: 20141154.
  61. Chen A, McEwen ML, Sun S, Ravikumar R, Springer JE. Proteomic and phosphoproteomic analyses of the soluble fraction following acute spinal cord contusion in rats. *J Neurotrauma*. 2010 Jan;27(1):263-74. doi: 10.1089/neu.2009.1051. PMID: 19691422; PMCID: PMC2864456.
  62. Yao XQ, Liu ZY, Chen JY, Huang ZC, Liu JH, Sun BH, Zhu QA, Ding RT, Chen JT. Proteomics and bioinformatics reveal insights into neuroinflammation in the acute to subacute phases in rat models of spinal cord contusion injury. *FASEB J*. 2021 Jul;35(7):e21735. doi: 10.1096/fj.202100081RR. PMID: 34143440.
  63. Didangelos A, Puglia M, Iberl M, Sanchez-Bellot C, Roschitzki B, Bradbury EJ. High-throughput proteomics reveal alarmins as amplifiers of tissue pathology and inflammation after spinal cord injury. *Sci Rep*. 2016 Feb 22;6:21607. doi: 10.1038/srep21607. PMID: 26899371; PMCID: PMC4761922.
  64. Qu J, Zhang H. Roles of Mesenchymal Stem Cells in Spinal Cord Injury. *Stem Cells Int*. 2017;2017:5251313. doi: 10.1155/2017/5251313. Epub 2017 May 28. PMID: 28630630; PMCID: PMC5467343.
  65. Huang JH, Yin XM, Xu Y, Xu CC, Lin X, Ye FB, Cao Y, Lin FY. Systemic Administration of Exosomes Released from Mesenchymal Stromal Cells Attenuates Apoptosis, Inflammation, and Promotes Angiogenesis after Spinal Cord Injury in Rats. *J Neurotrauma*. 2017 Dec 15;34(24):3388-3396. doi: 10.1089/neu.2017.5063. Epub 2017 Aug 18. PMID: 28665182.
  66. Zhou X, Chu X, Yuan H, Qiu J, Zhao C, Xin D, Li T, Ma W, Wang H, Wang Z, Wang D. Mesenchymal stem cell derived EVs mediate neuroprotection after spinal cord injury in rats via the microRNA-21-5p/FasL gene axis. *Biomed Pharmacother*. 2019 Jul;115:108818. doi: 10.1016/j.biopha.2019.108818. Epub 2019 May 16. PMID: 31102912.
  67. Liu W, Tang P, Wang J, Ye W, Ge X, Rong Y, Ji C, Wang Z, Bai J, Fan J, Yin G, Cai W. Extracellular vesicles derived from melatonin-preconditioned mesenchymal stem cells containing USP29 repair traumatic spinal cord injury by stabilizing NRF2. *J Pineal Res*. 2021 Dec;71(4):e12769. doi: 10.1111/jpi.12769. Epub 2021 Oct 2. PMID: 34562326.
  68. Fry EJ, Saunders NR. Spinal repair in immature animals: a novel approach using the South American opossum *Monodelphis domestica*. *Clin Exp Pharmacol Physiol*. 2000 Jul;27(7):542-7. doi: 10.1046/j.1440-1681.2000.03296.x. PMID: 10874515.
  69. Wheaton BJ, Sena J, Sundararajan A, Umale P, Schilkey F, Miller RD. Identification of regenerative processes in neonatal spinal cord injury in the opossum (*Monodelphis domestica*): A transcriptomic study. *J Comp Neurol*. 2021 Apr 1;529(5):969-986. doi: 10.1002/cne.24994. Epub 2020 Aug 4. PMID: 32710567; PMCID: PMC7855507.
  70. Borodinsky LN. *Xenopus laevis* as a Model Organism for the Study of Spinal Cord Formation, Development, Function and Regeneration. *Front Neural Circuits*. 2017 Nov 23;11:90. doi: 10.3389/fncir.2017.00090. PMID: 29218002; PMCID: PMC5704749.
  71. Edwards-Faret G, Muñoz R, Méndez-Olivos EE, Lee-Liu D, Tapia VS, Larraín J. Spinal cord regeneration in *Xenopus laevis*. *Nat Protoc*. 2017 Feb;12(2):372-389. doi: 10.1038/nprot.2016.177. Epub 2017 Jan 19. PMID: 28102835.
  72. Slater PG, Larraín J. Spinal Cord Transection In *Xenopus laevis* Tadpoles. *J Vis Exp*. 2021 Dec 10;(178). doi: 10.3791/63276. PMID: 34958088.
  73. Lee-Liu D, Sun L, Dovichi NJ, Larraín J. Quantitative Proteomics After Spinal Cord Injury (SCI) in a Regenerative and a Nonregenerative Stage in the Frog *Xenopus laevis*. *Mol Cell Proteomics*. 2018 Apr;17(4):592-606. doi: 10.1074/mcp.RA117.000215. Epub 2018 Jan 22. PMID: 29358338; PMCID: PMC5880103.
  74. Tomljanović I, Petrović A, Ban J, Mladinic M. Proteomic analysis of opossum *Monodelphis domestica* spinal cord reveals the changes of proteins related to neurodegenerative diseases during developmental period when neuroregeneration stops being possible. *Biochem Biophys Res Commun*. 2022 Jan 8;587:85-91. doi: 10.1016/j.bbrc.2021.11.078. Epub 2021 Nov 27. PMID: 34864550.
  75. Noor NM, Steer DL, Wheaton BJ, Ek CJ, Truettner JS, Dietrich WD, Dziegielewska KM, Richardson SJ, Smith AI, VandeBerg JL, Saunders NR. Age-dependent changes in the proteome following complete spinal cord transection in a postnatal South American opossum (*Monodelphis domestica*). *PLoS One*. 2011;6(11):e27465. doi: 10.1371/journal.pone.0027465. Epub 2011 Nov 16. PMID: 22110655; PMCID: PMC3217969.
  76. Saunders NR, Noor NM, Dziegielewska KM, Wheaton BJ, Liddelow SA, Steer DL, Ek CJ, Habgood MD, Wakefield MJ, Lindsay H, Truettner J, Miller RD, Smith AI, Dietrich WD. Age-dependent transcriptome and proteome following transection of neonatal spinal cord of *Monodelphis domestica* (South American grey short-tailed opossum). *PLoS One*. 2014 Jun 10;9(6):e99080. doi: 10.1371/journal.pone.0099080. PMID: 24914927; PMCID: PMC4051688.
  77. Wang YC, Feng GY, Xia QJ, Hu Y, Xu Y, Xiong LL, Chen ZW, Wang HP, Wang TH, Zhou X. Knockdown of  $\alpha$ -synuclein in cerebral cortex improves neural behavior associated with apoptotic inhibition and neurotrophin expression in spinal cord transected rats. *Apoptosis*. 2016 Apr;21(4):404-20. doi: 10.1007/s10495-016-1218-5. PMID: 26822976.
  78. Liu R, Zhao W, Zhao Q, Liu SJ, Liu J, He M, Xu Y, Wang W, Liu W, Xia QJ, Li CY, Wang TH. Endoplasmic reticulum protein 29 protects cortical neurons from apoptosis and promoting

- corticospinal tract regeneration to improve neural behavior via caspase and Erk signal in rats with spinal cord transection. *Mol Neurobiol.* 2014 Dec;50(3):1035-48. doi: 10.1007/s12035-014-8681-1. Epub 2014 May 3. PMID: 24794144.
79. Shang FF, Zhao W, Zhao Q, Liu J, Li DW, Zhang H, Zhou XF, Li CY, Wang TH. Upregulation of eIF-5A1 in the paralyzed muscle after spinal cord transection associates with spontaneous hindlimb locomotor recovery in rats by upregulation of the ErbB, MAPK and neurotrophin signal pathways. *J Proteomics.* 2013 Oct 8;91:188-99. doi: 10.1016/j.jprot.2012.12.002. Epub 2012 Dec 11. PMID: 23238062.
  80. Liu W, Shang FF, Xu Y, Belegu V, Xia L, Zhao W, Liu R, Wang W, Liu J, Li CY, Wang TH. eIF5A1/RhoGDI $\alpha$  pathway: a novel therapeutic target for treatment of spinal cord injury identified by a proteomics approach. *Sci Rep.* 2015 Nov 23;5:16911. doi: 10.1038/srep16911. PMID: 26593060; PMCID: PMC4655360.
  81. Huang Z, Wang C. A Review on Differential Abundance Analysis Methods for Mass Spectrometry-Based Metabolomic Data. *Metabolites.* 2022 Mar 30;12(4):305. doi: 10.3390/metabo12040305. PMID: 35448492; PMCID: PMC9032534.
  82. Nephali L, Piater LA, Dubery IA, Patterson V, Huyser J, Burgess K, Tugizimana F. Biostimulants for Plant Growth and Mitigation of Abiotic Stresses: A Metabolomics Perspective. *Metabolites.* 2020 Dec 10;10(12):505. doi: 10.3390/metabo10120505. PMID: 33321781; PMCID: PMC7764227.
  83. Kumar A, Ghosh D, Singh RL. Amyotrophic Lateral Sclerosis and Metabolomics: Clinical Implication and Therapeutic Approach. *J Biomark.* 2013;2013:538765. doi: 10.1155/2013/538765. Epub 2013 Mar 14. PMID: 26317018; PMCID: PMC4437352.
  84. Wang C, Jiang S, Zhang S, Ouyang Z, Wang G, Wang F. Research Progress of Metabolomics in Asthma. *Metabolites.* 2021 Aug 24;11(9):567. doi: 10.3390/metabo11090567. PMID: 34564383; PMCID: PMC8466166.
  85. Zhang Y, Yang Y, Ding L, Wang Z, Xiao Y, Xiao W. Emerging Applications of Metabolomics to Assess the Efficacy of Traditional Chinese Medicines for Treating Type 2 Diabetes Mellitus. *Front Pharmacol.* 2021 Sep 17;12:735410. doi: 10.3389/fphar.2021.735410. PMID: 34603052; PMCID: PMC8486080.
  86. Oliveira RV, Simonato AVC, Cass QB. Enantioselectivity Effects in Clinical Metabolomics and Lipidomics. *Molecules.* 2021 Aug 28;26(17):5231. doi: 10.3390/molecules26175231. PMID: 34500665; PMCID: PMC8433918.
  87. Yan J, Kuzhiumparambil U, Bhandodkar S, Dale RC, Fu S. Cerebrospinal fluid metabolomics: detection of neuroinflammation in human central nervous system disease. *Clin Transl Immunology.* 2021 Aug 6;10(8):e1318. doi: 10.1002/cti2.1318. PMID: 34386234; PMCID: PMC8343457.
  88. Yang H, Zhang P, Xie M, Luo J, Zhang J, Zhang G, Wang Y, Lin H, Ji Z. Parallel Metabolomic Profiling of Cerebrospinal Fluid, Plasma, and Spinal Cord to Identify Biomarkers for Spinal Cord Injury. *J Mol Neurosci.* 2022 Jan;72(1):126-135. doi: 10.1007/s12031-021-01903-w. Epub 2021 Sep 9. PMID: 34498202; PMCID: PMC8755701.
  89. Wu Y, Streijger F, Wang Y, Lin G, Christie S, Mac-Thiong JM, Parent S, Bailey CS, Paquette S, Boyd MC, Ailon T, Street J, Fisher CG, Dvorak MF, Kwon BK, Li L. Parallel Metabolomic Profiling of Cerebrospinal Fluid and Serum for Identifying Biomarkers of Injury Severity after Acute Human Spinal Cord Injury. *Sci Rep.* 2016 Dec 14;6:38718. doi: 10.1038/srep38718. PMID: 27966539; PMCID: PMC5155264.
  90. Peng J, Zeng J, Cai B, Yang H, Cohen MJ, Chen W, Sun MW, Lu CD, Jiang H. Establishment of quantitative severity evaluation model for spinal cord injury by metabolomic fingerprinting. *PLoS One.* 2014 Apr 11;9(4):e93736. doi: 10.1371/journal.pone.0093736. PMID: 24727691; PMCID: PMC3984092.
  91. Jiang H, Peng J, Zhou ZY, Duan Y, Chen W, Cai B, Yang H, Zhang W. Establishing <sup>1</sup>H nuclear magnetic resonance based metabolomics fingerprinting profile for spinal cord injury: a pilot study. *Chin Med J (Engl).* 2010 Sep;123(17):2315-9. PMID: 21034541.
  92. Bykowski EA, Petersson JN, Dukelow S, Ho C, Debert CT, Montana T, Metz GAS. Urinary biomarkers indicative of recovery from spinal cord injury: A pilot study. *IBRO Neurosci Rep.* 2021 Feb 18;10:178-185. doi: 10.1016/j.ibneur.2021.02.007. PMID: 33842921; PMCID: PMC8020035.
  93. Figueroa JD, Cordero K, Llán MS, De Leon M. Dietary omega-3 polyunsaturated fatty acids improve the neurolipidome and restore the DHA status while promoting functional recovery after experimental spinal cord injury. *J Neurotrauma.* 2013 May 15;30(10):853-68. doi: 10.1089/neu.2012.2718. Epub 2013 Feb 6. PMID: 23294084; PMCID: PMC3660112.
  94. Figueroa JD, Serrano-Illan M, Licero J, Cordero K, Miranda JD, De Leon M. Fatty Acid Binding Protein 5 Modulates Docosahexaenoic Acid-Induced Recovery in Rats Undergoing Spinal Cord Injury. *J Neurotrauma.* 2016 Aug 1;33(15):1436-49. doi: 10.1089/neu.2015.4186. Epub 2016 Mar 29. PMID: 26715431; PMCID: PMC4971412.
  95. Figueroa JD, De Leon M. Neurorestorative targets of dietary long-chain omega-3 fatty acids in neurological injury. *Mol Neurobiol.* 2014 Aug;50(1):197-213. doi: 10.1007/s12035-014-8701-1. Epub 2014 Apr 17. PMID: 24740740; PMCID: PMC4183712.
  96. Mu J, Wang T, Li M, Guan T, Guo Y, Zhang X, Zhang G, Kong J. Ketogenic diet protects myelin and axons in diffuse axonal injury. *Nutr Neurosci.* 2022 Jul;25(7):1534-1547. doi: 10.1080/1028415X.2021.1875300. Epub 2021 Jan 23. PMID: 33487123.
  97. Tan BT, Jiang H, Moulson AJ, Wu XL, Wang WC, Liu J, Plunet WT, Tetzlaff W. Neuroprotective effects of a ketogenic diet in combination with exogenous ketone salts following acute spinal cord injury. *Neural Regen Res.* 2020 Oct;15(10):1912-1919. doi: 10.4103/1673-5374.280327. PMID: 32246640; PMCID: PMC7513973.
  98. Mayr KA, Kwok CHT, Eaton SEA, Baker GB, Whelan PJ. The Effects of a Ketogenic Diet on Sensorimotor Function in a Thoracolumbar Mouse Spinal Cord Injury Model. *eNeuro.* 2020 Aug 13;7(4):ENEURO.0178-20.2020. doi: 10.1523/ENEURO.0178-20.2020. PMID: 32680835; PMCID: PMC7433893.
  99. Zhang Q, Liu X, Yan L, Zhao R, An J, Liu C, Yang H. Danshen extract (*Salvia miltiorrhiza* Bunge) attenuate spinal cord injury in a rat model: A metabolomic approach for the mechanism study. *Phytomedicine.* 2019 Sep;62:152966. doi: 10.1016/j.phymed.2019.152966. Epub 2019 May 21. PMID: 31132751.
  100. Dulin JN, Karoly ED, Wang Y, Strobel HW, Grill RJ. Licofelone modulates neuroinflammation and attenuates mechanical hypersensitivity in the chronic phase of spinal cord injury. *J Neurosci.* 2013 Jan 9;33(2):652-64. doi: 10.1523/JNEUROSCI.6128-11.2013. PMID: 23303944; PMCID: PMC3586230.
  101. Wallace DJ, Sayre NL, Patterson TT, Nicholson SE, Hilton D, Grandhi R. Spinal cord injury and the human microbiome: beyond the brain-gut axis. *Neurosurg Focus.* 2019 Mar 1;46(3):E11. doi: 10.3171/2018.12.FOCUS18206. PMID: 30835680.
  102. Jogia T, Ruitenberg MJ. Traumatic Spinal Cord Injury and the Gut Microbiota: Current Insights and Future Challenges. *Front Immunol.* 2020 May 8;11:704. doi: 10.3389/fimmu.2020.00704. PMID: 32528463; PMCID: PMC7247863.
  103. Sender R, Fuchs S, Milo R. Revised Estimates for the Number

- of Human and Bacteria Cells in the Body. *PLoS Biol.* 2016 Aug 19;14(8):e1002533. doi: 10.1371/journal.pbio.1002533. PMID: 27541692; PMCID: PMC4991899.
104. Bannerman CA, Douchant K, Sheth PM, Ghasemlou N. The gut-brain axis and beyond: Microbiome control of spinal cord injury pain in humans and rodents. *Neurobiol Pain.* 2020 Dec 18;9:100059. doi: 10.1016/j.nypai.2020.100059. PMID: 33426367; PMCID: PMC7779861.
105. Kigerl KA, Zane K, Adams K, Sullivan MB, Popovich PG. The spinal cord-gut-immune axis as a master regulator of health and neurological function after spinal cord injury. *Exp Neurol.* 2020 Jan;323:113085. doi: 10.1016/j.expneurol.2019.113085. Epub 2019 Oct 22. PMID: 31654639; PMCID: PMC6918675.
106. El Aidy S, Dinan TG, Cryan JF. Gut Microbiota: The Conductor in the Orchestra of Immune-Neuroendocrine Communication. *Clin Ther.* 2015 May 1;37(5):954-67. doi: 10.1016/j.clinthera.2015.03.002. Epub 2015 Apr 3. PMID: 25846319.
107. Rutanga JP, Van Puyvelde S, Heroes AS, Muvunyi CM, Jacobs J, Deborggraave S. 16S metagenomics for diagnosis of bloodstream infections: opportunities and pitfalls. *Expert Rev Mol Diagn.* 2018 Aug;18(8):749-759. doi: 10.1080/14737159.2018.1498786. Epub 2018 Jul 18. PMID: 29985081.
108. Garcia-Mazcorro JF, Barcenas-Walls JR. Thinking beside the box: Should we care about the non-coding strand of the 16S rRNA gene? *FEMS Microbiol Lett.* 2016 Aug;363(16):fnw171. doi: 10.1093/femsle/fnw171. Epub 2016 Jul 12. PMID: 27412167.
109. Clarridge JE 3rd. Impact of 16S rRNA gene sequence analysis for identification of bacteria on clinical microbiology and infectious diseases. *Clin Microbiol Rev.* 2004 Oct;17(4):840-62, table of contents. doi: 10.1128/CMR.17.4.840-862.2004. PMID: 15489351; PMCID: PMC523561.
110. O'Connor G, Jeffrey E, Madorma D, Marcillo A, Abreu MT, Deo SK, Dietrich WD, Daunert S. Investigation of Microbiota Alterations and Intestinal Inflammation Post-Spinal Cord Injury in Rat Model. *J Neurotrauma.* 2018 Sep 15;35(18):2159-2166. doi: 10.1089/neu.2017.5349. Epub 2018 Jun 7. PMID: 29566601; PMCID: PMC6119224.
111. Doelman A, Tigchelaar S, McConeghy B, Sinha S, Keung MS, Manouchehri N, Webster M, Fisk S, Morrison C, Streijger F, Nislow C, Kwon BK. Characterization of the gut microbiome in a porcine model of thoracic spinal cord injury. *BMC Genomics.* 2021 Oct 30;22(1):775. doi: 10.1186/s12864-021-07979-3. Erratum in: *BMC Genomics.* 2021 Dec 6;22(1):879. PMID: 34717545; PMCID: PMC8557039.
112. Lin R, Xu J, Ma Q, Chen M, Wang L, Wen S, Yang C, Ma C, Wang Y, Luo Q, Zhu N. Alterations in the fecal microbiota of patients with spinal cord injury. *PLoS One.* 2020 Aug 4;15(8):e0236470. doi: 10.1371/journal.pone.0236470. PMID: 32750057; PMCID: PMC7402510.
113. Zhang C, Zhang W, Zhang J, Jing Y, Yang M, Du L, Gao F, Gong H, Chen L, Li J, Liu H, Qin C, Jia Y, Qiao J, Wei B, Yu Y, Zhou H, Liu Z, Yang D, Li J. Gut microbiota dysbiosis in male patients with chronic traumatic complete spinal cord injury. *J Transl Med.* 2018 Dec 13;16(1):353. doi: 10.1186/s12967-018-1735-9. PMID: 30545398; PMCID: PMC6293533.
114. Li J, Morrow C, Barnes S, Wilson L, Womack ED, McLain A, Yasar-Fisher C. Gut Microbiome Composition and Serum Metabolome Profile Among Individuals With Spinal Cord Injury and Normal Glucose Tolerance or Prediabetes/Type 2 Diabetes. *Arch Phys Med Rehabil.* 2022 Apr;103(4):702-710. doi: 10.1016/j.apmr.2021.03.043. Epub 2021 Jun 12. PMID: 34126067.
115. Gungor B, Adiguzel E, Gursel I, Yilmaz B, Gursel M. Intestinal Microbiota in Patients with Spinal Cord Injury. *PLoS One.* 2016 Jan 11;11(1):e0145878. doi: 10.1371/journal.pone.0145878. PMID: 26752409; PMCID: PMC4709077.
116. Li J, Van Der Pol W, Eraslan M, McLain A, Cetin H, Cetin B, Morrow C, Carson T, Yasar-Fisher C. Comparison of the gut microbiome composition among individuals with acute or long-standing spinal cord injury vs. able-bodied controls. *J Spinal Cord Med.* 2022 Jan;45(1):91-99. doi: 10.1080/10790268.2020.1769949. Epub 2020 Jun 4. PMID: 32496944; PMCID: PMC8890582.
117. Yu B, Qiu H, Cheng S, Ye F, Li J, Chen S, Zhou L, Yang Y, Zhong C, Li J. Profile of gut microbiota in patients with traumatic thoracic spinal cord injury and its clinical implications: a case-control study in a rehabilitation setting. *Bioengineered.* 2021 Dec;12(1):4489-4499. doi: 10.1080/21655979.2021.1955543. PMID: 34311653; PMCID: PMC8806552.
118. Bazzocchi G, Turrone S, Bulzamini MC, D'Amico F, Bava A, Castiglioni M, Cagnetta V, Losavio E, Cazzaniga M, Terenghi L, De Palma L, Frasca G, Aiachini B, Cremascoli S, Massone A, Oggerino C, Onesta MP, Rapisarda L, Pagliacci MC, Biscotto S, Scarazzato M, Giovannini T, Balloni M, Candela M, Brigidi P, Kiekens C. Changes in gut microbiota in the acute phase after spinal cord injury correlate with severity of the lesion. *Sci Rep.* 2021 Jun 17;11(1):12743. doi: 10.1038/s41598-021-92027-z. PMID: 34140572; PMCID: PMC8211659.
119. Schmidt EKA, Raposo PJF, Torres-Espin A, Fenrich KK, Fouad K. Beyond the lesion site: minocycline augments inflammation and anxiety-like behavior following SCI in rats through action on the gut microbiota. *J Neuroinflammation.* 2021 Jun 26;18(1):144. doi: 10.1186/s12974-021-02123-0. PMID: 34174901; PMCID: PMC8234629.
120. Cheng J, Li W, Wang Y, Cao Q, Ni Y, Zhang W, Guo J, Chen B, Zang Y, Zhu Y. Electroacupuncture modulates the intestinal microecology to improve intestinal motility in spinal cord injury rats. *Microb Biotechnol.* 2022 Mar;15(3):862-873. doi: 10.1111/1751-7915.13968. Epub 2021 Nov 19. PMID: 34797954; PMCID: PMC8913878.
121. Jing Y, Yang D, Bai F, Zhang C, Qin C, Li D, Wang L, Yang M, Chen Z, Li J. Melatonin Treatment Alleviates Spinal Cord Injury-Induced Gut Dysbiosis in Mice. *J Neurotrauma.* 2019 Sep 15;36(18):2646-2664. doi: 10.1089/neu.2018.6012. Epub 2019 Mar 28. PMID: 30693824.
122. Schmidt EKA, Raposo PJF, Madsen KL, Fenrich KK, Kabarchuk G, Fouad K. What Makes a Successful Donor? Fecal Transplant from Anxious-Like Rats Does Not Prevent Spinal Cord Injury-Induced Dysbiosis. *Biology (Basel).* 2021 Mar 24;10(4):254. doi: 10.3390/biology10040254. PMID: 33804928; PMCID: PMC8063845.
123. Jing Y, Yu Y, Bai F, Wang L, Yang D, Zhang C, Qin C, Yang M, Zhang D, Zhu Y, Li J, Chen Z. Effect of fecal microbiota transplantation on neurological restoration in a spinal cord injury mouse model: involvement of brain-gut axis. *Microbiome.* 2021 Mar 7;9(1):59. doi: 10.1186/s40168-021-01007-y. PMID: 33678185; PMCID: PMC7937282.
124. Bossa L, Kline K, McDougald D, Lee BB, Rice SA. Urinary catheter-associated microbiota change in accordance with treatment and infection status. *PLoS One.* 2017 Jun 19;12(6):e0177633. doi: 10.1371/journal.pone.0177633. PMID: 28628622; PMCID: PMC5476236.
125. Kigerl KA, Hall JC, Wang L, Mo X, Yu Z, Popovich PG. Gut dysbiosis impairs recovery after spinal cord injury. *J Exp Med.* 2016 Nov 14;213(12):2603-2620. doi: 10.1084/jem.20151345. Epub 2016 Oct 17. PMID: 27810921; PMCID: PMC5110012.
126. Myers SA, Gobejishvili L, Saraswat Ohri S, Garrett Wilson C, Andres KR, Riegler AS, Donde H, Joshi-Barve S, Barve S, Whittemore SR. Following spinal cord injury, PDE4B drives an acute, local inflammatory response and a chronic, systemic

- response exacerbated by gut dysbiosis and endotoxemia. *Neurobiol Dis.* 2019 Apr;124:353-363. doi: 10.1016/j.nbd.2018.12.008. Epub 2018 Dec 14. PMID: 30557659; PMCID: PMC6445388.
127. Yang Z, Chen X, Liu R, Wang C, Zhao Y, Shi Z, Li M. Gene sequence analysis and screening of feature genes in spinal cord injury. *Mol Med Rep.* 2015 May;11(5):3615-20. doi: 10.3892/mmr.2015.3220. Epub 2015 Jan 19. PMID: 25607546.