

Fig. S1. Comparative analysis of the embryonic stem cell (ESCs)-related mRNA expressions from different sources. Quantitative RT-PCR analysis showed the expression of ESCs markers. Values represent mean \pm SD of independent experiments run in triplicate. *: compared to HFDPCs. * $p < 0.05$.

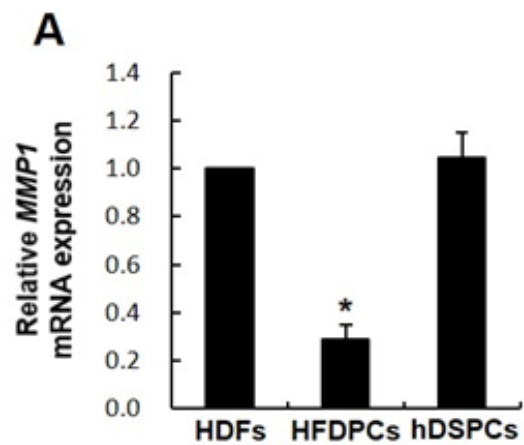


Fig. S2. Quantitative RT-PCR analysis showed the expression of *MMP1*. Values represent mean \pm SD of independent experiments run in triplicate. *: compared to HDFs, $p < 0.05$.